



**LEUPHANA**  
UNIVERSITÄT LÜNEBURG



# Verpflichtender Auslandsaufenthalt für Englisch Lehramtsstudierende



# Herzlich Willkommen!

## Agenda

Who we are: contact

The Destination Abroad programme

Before you go abroad: planning efficiently

While you are there and when you return

Resources on the DA website

Combination of stay abroad and Praktikum

Study abroad

Experiences from previous stay-abroad experiences



# The Destination Abroad Office

- **Prof. Dr. Anne Barron & Dr. Diana Pili-Moss**
  - What:
    - Inform students about rules and regulations (please make sure you read in detail the online information first!)
    - Approve study abroad plans > sign Agreement Stay Abroad certificates (ASAs)
  - How:
    - Working hours: Wed. 15.00 - 17.00; Fri. 13.00 - 15.00
    - Meetings by appointment only; please contact the office by the email given below in the first instance
    - Email to: [destinationabroad@leuphana.de](mailto:destinationabroad@leuphana.de)



## Destination Abroad – What is that?

- As part of your teacher training program, students are required to complete a **three-month study-related stay abroad** in an English-speaking country (cf. **Rahmenprüfungsordnung Lehramt (May 2018; §3a, Absatz 10))**\*)
- **This is not yet official, but rules are changing:**
  - “Ist Chinesisch, Englisch, Französisch, Niederländisch, Russisch oder Spanisch Unterrichtsfach, so ist ein mindestens dreimonatiger studienrelevanter Auslandsaufenthalt in einem Land zu absolvieren, in dem die studierte Sprache Amtssprache sein soll“ (instead of previously „muss“) > Note: immersion conditions in an English-speaking environment must still be guaranteed



## What is a “suitable placement”?

- What does “**study related**” mean?
  - The stay abroad must allow you to experience the English language sufficiently in its socio-cultural context  
→ Such a context enables you to reflect upon what you have learned about **language and culture** throughout your studies in order to teach this to learners.
- *This is your chance to become a better teacher and gain valuable life experience!*



## What is a “suitable placement”?

- **Relevant study-related stays abroad in the English-speaking world include:**
  - Teaching (school, university, informal educational settings)
  - Observing/shadowing a teacher (school, university, informal educational settings)
  - Working/volunteering at an English speaking association, language course, organisation, business or company
  - AuPair (**restrictions apply**)      or
  - Studying at an English speaking university



**A quality that is crucial to a successfully planned stay abroad?**

**proactivity**



## Before you go abroad

### Important: Four Steps to Follow to Prepare Your Stay Abroad

(1) Inform yourself **in detail** on the Destination Abroad Website

- Rules and Regulations + **FAQs contain key information**
- Procedures and Process
- Forms and Templates
- Experiences and Partnerships

(2) Search and make initial contacts with potential hosting institutions to agree on possible dates and tasks

(3) Contact Destination Abroad Office via email **submitting an initial draft plan** for discussion

(4) Once your plan is approved, prepare and **sign Destination Abroad Agreement** with the Destination Abroad Office





## Step (3) of the planning process

### Initial planning draft for discussion: what's in it?

At this point you will have completed key initial research on the practical implementation of your idea. In order for us to evaluate the plan's feasibility, we ask you to provide information about:

- whether you would like to do an internship or study abroad
- for how long and when you would like to go (provisional dates DD/MM/YYYY)
- what type of activities you are going to do (internship), what courses you plan to study (study abroad)
- information about initial contacts with institutions (potentially) willing to host you



## During and after your stay

### Important: During the stay

- Get a signed **letter of reference** from your placement or **transcript of records** from the university (study abroad)

### Important: Upon your return

- Fill out and submit the online **Questionnaire Destination Abroad**
- Fill out the **Certificate of Completion** and hand it in to *study services*



# Destination Abroad: On the IES website

<b>INSTITUTE OF ENGLISH STUDIES (IES)</b>
English Didactics >
English Literature >
English Linguistics >
Areas Studies & Language Skills >
North American Studies >
LinA-Lab >
<b>Destination Abroad</b> v
About Us
The Process
Placement Partnerships
Interactive map: Placement & contact opportunities
Student Experiences
Additional Resources
FAQs
Document Download and Stay Abroad Questionnaire
Info for Potential Partners
TEFL - The Flipped Classroom
Study Information
Staff >
Contact

LEUPHANA // INSTITUTES // INSTITUTE OF ENGLISH STUDIES (IES) // DESTINATION ABROAD

## DESTINATION ABROAD

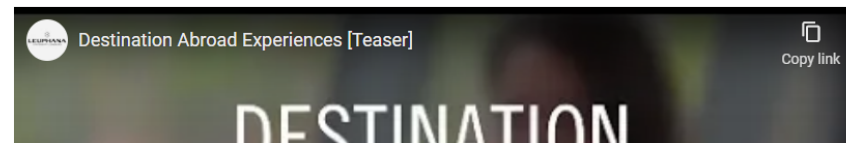
As part of the Leuphana **English teacher training program**, students are required to complete a **three-month study-related stay abroad** in an **English-speaking country** (cf. Rahmenprüfungsordnung Lehramt (May 2018; §3a, Absatz 10) and Nds. MasterVO-Lehr, § 8)

In order for your stay to be recognised, it needs to be **study-relevant**. That means the stay abroad must allow you to experience the English language sufficiently in its socio-cultural context. Such a context enables you to reflect upon what you have learned about language and culture throughout your studies in order to teach this to learners.

Relevant study-related stays abroad in the English-speaking world include:

- Teaching (school, university, informal educational settings)
- Observing/shadowing a teacher (school, university, informal educational settings)
- Studying at an English speaking university
- Working/volunteering at an English speaking association, language course, organisation, business or company

When arranging your stay abroad, you must ensure that it is in an environment where you will be actively using English on a daily basis.



Collection of resources on the website including:

- Regulations and procedures
- Destination Abroad partner placements
- Links to other helpful resources



# Destination Abroad: On the IES website

LEUPHANA // INSTITUTES // INSTITUTE OF ENGLISH STUDIES (IES) // DESTINATION ABROAD // PLACEMENT PARTNERSHIPS

## PLACEMENT PARTNERSHIPS

We have a number of partnerships with institutions who have welcomed Leuphana students in the past. For further information on the teaching assistant and student exchange programme, please visit the [International Office](#). To access their extensive database on student exchange programmes with partnering institutions click [here](#).

CONTACT	COUNTRY	POSITION
<b><i>UNIVERSITIES</i></b>		
<a href="#"><u>University of East Anglia</u></a>	England	Exchange student (*Lehramt English students are favoured in this exchange)
<a href="#"><u>University of Stirling</u></a>	Scotland	Exchange student (*Lehramt English students are favoured in this exchange)
<a href="#"><u>University of Glasgow</u></a>	Scotland	Exchange student (*Lehramt English students are favoured in this exchange, Bachelor only)
<a href="#"><u>University of Limerick</u></a>	Ireland	Exchange student in MA studies
<a href="#"><u>Chandigarh University</u></a>	India	Exchange student (Bachelor only)
<a href="#"><u>University of Mount Union</u></a>	USA	Exchange student
<a href="#"><u>Colorado College</u></a>	USA	Exchange student (Bachelor only)

and many more!

\*List of placement partnerships currently being updated, please check website



# Destination Abroad: On the IES website

LEUPHANA // INSTITUTES // INSTITUTE OF ENGLISH STUDIES (IES) // DESTINATION ABROAD // FAQs

## FAQS

- [I am worried to go abroad because of Covid - what are the rules?](#)
- [Why do I have to go abroad?](#)
- [I have been abroad before. Do I have to go again?](#)
- [What does 'study related' mean?](#)
- [Is it possible to spend the first study-related internship "SPS I" abroad?](#)
- [When is the best time to go?](#)
- [What if my stay abroad overlaps with the beginning of the new semester?](#)
- [Can I take a semester off \(Urlaubssemester\) when going abroad?](#)
- [Can I stay less than three months or split my stay?](#)
- [In which countries can I complete my stay abroad?](#)
- [I want to study abroad. Is that possible?](#)
- [Studying abroad: How do I choose my modules?](#)
- [Does the placement have to be in a pedagogical or school environment?](#)
- [Where can I get financial support?](#)
- [How do I get my stay recognised?](#)
- [I am a native speaker. Do I have to go abroad?](#)

...important to read these!



## From the FAQs

It is possible to **split the stay** (6 + 6 weeks or 8 + 4 weeks)

When spent **abroad, SPS1 or SPS2** count towards the fulfilment of the stay-abroad requirement

Overall 3 months, with a commitment of at least **25 hours/week**



# So many decisions...

Leuphana Language Game Lab

LinA-Lab

**Destination Abroad**

About Us

The Process

Placement Partnerships

Interactive map: Placement & contact opportunities

**Student Experiences**

Additional Resources

FAQs


Document Download and Stay Abroad Questionnaire

Info for Potential Partners

Studieninformationen


Veranstaltungen

## STUDENT EXPERIENCES



Destination Abroad Experiences: Hannah

DESTINATION AUSTRALIA



Destination Abroad Experiences: Hanna

DESTINATION INDIA

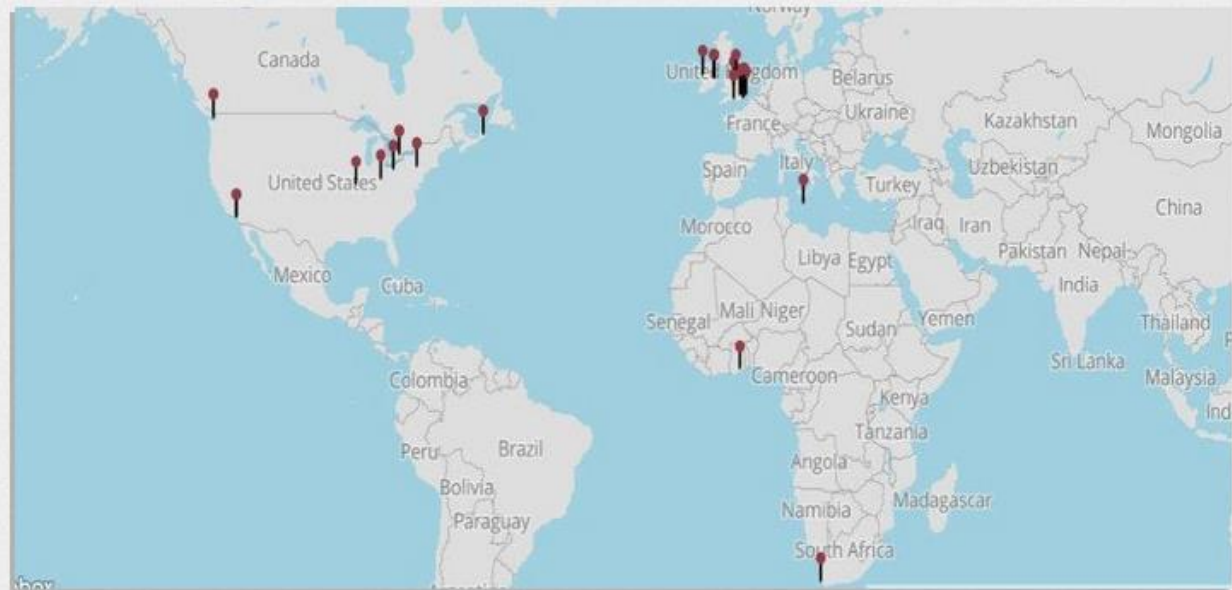




# So many decisions...

- North American Studies
- Leuphana Language Game Lab
- LinA-Lab
- Destination Abroad
- About Us
- The Process
- Placement Partnerships
- Interactive map: Placement & contact opportunities
- Student Experiences
- Additional Resources
- FAQs
- Document Download and Stay Abroad Questionnaire
- Info for Potential Partners
- Studieninformationen
- Veranstaltungen

## INTERACTIVE MAP: PLACEMENT & CONTACT OPPORTUNITIES



Search our **internal log-in area** » reserved exclusively for students of Lehramt Englisch at the Leuphana. Use our interactive map to see where your fellow students have been on their stay abroad, learn of their experiences (also via direct contact) and get some potential placement contacts abroad!





# So many decisions...

## LOGIN

To access the searchable database of experience reports and previous placements developed by Destination Abroad, it is necessary to log-in using the log-in password distributed by Destination Abroad on Destination Abroad posters displayed in the Institute of English Studies or during regular Destination Abroad information sessions.

Username

Password

LOGIN

Username: students

Password: students



# Kombination Schulpraktika + Auslandsaufenthalt

- Grundsätzlich können im B.A. LuL sowohl die SPS 1 als auch die SPS 2 im Ausland absolviert werden. In den LBS-Studiengängen können die Praktika im BA und MEd im Ausland absolviert werden.
- **Option A:** Anerkennung eines an einer Partnerhochschule absolvierten Praktikums (insb. Erasmus+).
- **Option B:** Selbst organisierte Schule im Ausland und Begleitung (+ Prüfung) durch die Leuphana.
  - Zeitraum des Praktikums muss (ungefähr) mit Zeitraum in Lüneburg übereinstimmen.
  - Zum Prüfungszeitpunkt müssen Sie in Lüneburg eingeschrieben sein.
  - Alle Regelungen (z. B. Prüfungsanforderungen) des Praktikums gelten auch im Ausland
- **Immer: Infopaket Praktikum im Ausland lesen + persönlich melden (timo.beckmann@leuphana.de) >> Dr. Timo Beckmann**



# Auslandspraktika: Fördermöglichkeiten

- Förderung von selbstgesuchten Praktika an Schulen im Ausland, 1-6 Monate, für Lehramtstudierende aller Fächer und Schulformen, Bewerbung direkt beim DAAD: [www.studieren-weltweit.de/lehramt](http://www.studieren-weltweit.de/lehramt)
- Erasmus+ Förderung von selbstgesuchten Praktika im europäischen Ausland, 2-12 Monate, Bewerbung über das IO der Leuphana: [www.uni-hannover.de/eu-praktika](http://www.uni-hannover.de/eu-praktika)
- Förderung und Vermittlung von Sprachassistenzen, 5-11 Monate, Bewerbung direkt beim Pädagogischen Austauschdienst: <https://www.kmk-pad.org/programme/fremdsprachenassistentenkraefte/studierende-aus-deutschland.html>
- Ansprechperson im **International Office: Eva Vosshagen**







**And now.....**

# **Some stay-abroad experience reports**





# Mein Auslandssemester in Schottland







# University of Stirling Campaigns















A landscape photograph showing a stone path leading through a grassy field towards rolling green hills under a cloudy sky. The path is made of large, flat, grey stones and is surrounded by tall grass and some small white flowers. The hills in the background are covered in green grass and have a few small trees or bushes. The sky is blue with some white clouds.

# Clubs and Societies















An aerial photograph of a winding asphalt road that curves through rolling green hills. The scene is bathed in the warm, golden light of a sunset or sunrise, with long shadows cast across the terrain. The hills are covered in lush green grass, and a wooden fence runs along the edge of the road. The overall atmosphere is peaceful and scenic.

# Ausflüge

































**Vielen Dank für eure Aufmerksamkeit**







# School and School Life

---

- Location of private school "*Penuel International School*": Kasoa
- All levels from nursery to Junior High School
- More than 1300 students with different nationalities
- Opportunity to look at classes of different levels  
→ taught classes I felt comfortable with
- Had Chinese interns in the past
- Director and wife offered help and guidance in any respect, offered to show me around
- Since this year, they offer private accommodation for interns





# Thank you!

[destinationabroad@leuphana.de](mailto:destinationabroad@leuphana.de)