

# Study-Abroad requirement for students of English in Lower Saxony (Lehramt)





# Herzlich Willkommen!

## Agenda

- The requirement: what it is, what it means for me
- Destination Abroad: who we are, what we do (what we don't)
- Before you go abroad: planning efficiently
- While you are there and when you return
- Resources on the DA website
- Stay-Abroad Splitting
- Combination of stay abroad and Praktikum
- Study abroad: funding opportunities



# The Destination Abroad Office

- Prof. Dr. Anne Barron, Dr. Diana Pili-Moss, Leonie Preuße
  - What:
    - Inform students about the viability of their stay-abroad proposals (please make sure you read ***in detail*** the online information before you start to draft your plan!)
    - Evaluate final study abroad plans > approve plans > sign + stamp Agreement Stay Abroad certificates (ASAs)
  - How:
    - Office hours: Friday 10-13
    - Meetings **by appointment only**; please contact the office by the email given below in the first instance
    - Email to: [destinationabroad@leuphana.de](mailto:destinationabroad@leuphana.de)



## Destination Abroad – What is that?

- As part of your teacher training program, students are required to complete a **three-month study-related stay abroad** in an English-speaking country (cf. **Rahmenprüfungsordnung Lehramt (May 2018; §3a, Absatz 10))**)

What does “**study related**” mean?

- The stay abroad must allow you to experience the English language sufficiently in its socio-cultural context  
→ Such a context enables you to reflect upon what you have learned about **language and culture** throughout your studies in order to teach this to learners.



## Destination Abroad – What is that?

- As part of your teacher training program, students are required to complete a **three-month study-related stay abroad** in an English-speaking country (cf. **Rahmenprüfungsordnung Lehramt (May 2018; §3a, Absatz 10))**)

You are **required** to spend the period abroad, this is **not optional**.

- Officially this has the same weight of an examination: if you do not comply, you will not be able to graduate.



## Destination Abroad – What is that?

- As part of your teacher training program, students are required to complete a **three-month study-related stay abroad** in an English-speaking country (cf. **Rahmenprüfungsordnung Lehramt (May 2018; §3a, Absatz 10))**\*)

### \*Note:

Completing the stay in a country where English is an official language is by far the **smoothest and surest option** to ensure your plan is processed and accepted quickly.

### \*Note:

Countries where English is an official language include many more than the usual Ireland, US, Australia, etc. (see e.g.,

[https://en.wikipedia.org/wiki/List\\_of\\_official\\_languages\\_by\\_country\\_and\\_territory](https://en.wikipedia.org/wiki/List_of_official_languages_by_country_and_territory) (indicative source)



## Destination Abroad – What is that?

From 2023:

- Other countries where English is not the official/de facto language could be considered, but this **requires a case-by-case detailed and comparatively longer process of evaluation** to ensure the student will be immersed in an English speaking environment at advanced levels. This evaluation is made by the Destination Abroad office based on available evidence, *not the student*.

Factors considered (e.g.)

- Evaluation of the local environment of work/study abroad
- Evaluation of global indexes, e.g. the percentage of English-speaking population





# What is a “suitable placement”?

- Relevant study-related stays abroad in the English-speaking world include:

## Route 1

- Teaching (school, university, informal educational settings)
- Observing/shadowing a teacher (school, university, informal educational settings)
- Working/volunteering at an English speaking association, language course, organisation, business or company
- AuPair (**restrictions apply**) or

## Route 2

- Studying at an English speaking university (you can consider a broader choice than just the destinations indicated for Lehramt)





**When does the Destination Abroad procedure need to be completed?**

Independently of your type of stay abroad (internship or study abroad) you must get your ASA approved by us

**before you leave**



## When should I start the process?

To be on the safe side initiate the process by contacting us with your plan no later than **3 months** before your intended departure.



**A quality that is crucial to a successfully planned stay abroad?**

**proactivity**



## Before you go abroad

### Important: Four Steps to Follow to Prepare Your Stay Abroad

- (1) Inform yourself **in detail** on the Destination Abroad Website
  - Rules and Regulations + **FAQs contain key information**
  - Procedures and Process
  - Forms and Templates
  - Experiences and Partnerships
- (2) Search and make initial contacts with potential hosting institutions to agree on possible dates and tasks
- (3) Contact Destination Abroad Office via email **submitting an initial draft plan** for discussion
- (4) Once your plan is approved, prepare and **sign Destination Abroad Agreement** with the Destination Abroad Office (download from website)



## Step (3) of the planning process

### Initial planning draft for discussion: what's in it?

At this point you will have completed key initial research on the practical implementation of your idea. In order for us to evaluate the plan's feasibility, we ask you to provide information about:

- whether you would like to do an internship or study abroad
- for how long and when you would like to go (provisional dates DD/MM/YYYY)
- what type of activities you are going to do (internship), what courses you plan to study (study abroad)
- whether and for how many weeks your stay abroad overlaps with your lectures/seminars at Leuphana
- information about initial contacts with institutions (potentially) willing to host you



## Route 1: Internship

Information via the website >> Draft plan creation >> sending draft to DA for evaluation >> incorporate feedback and adjust plan >> re-submit .....>> upon confirmation plan is fine >> send completed and signed ASA form >> Stay can start



**Route 2: Study abroad (DA related, contact IO for other aspects such as learning agreement and financial support)**

Information via the website >> Draft plan process >> sending draft to DA for evaluation >> incorporate feedback and adjust plan >> re-submit .....>> upon confirmation plan is fine >> **contact person academically responsible to okay course choice** (currently Dr Ulrike Köhler) + let us know they did >> send completed and signed ASA form >> Stay can start



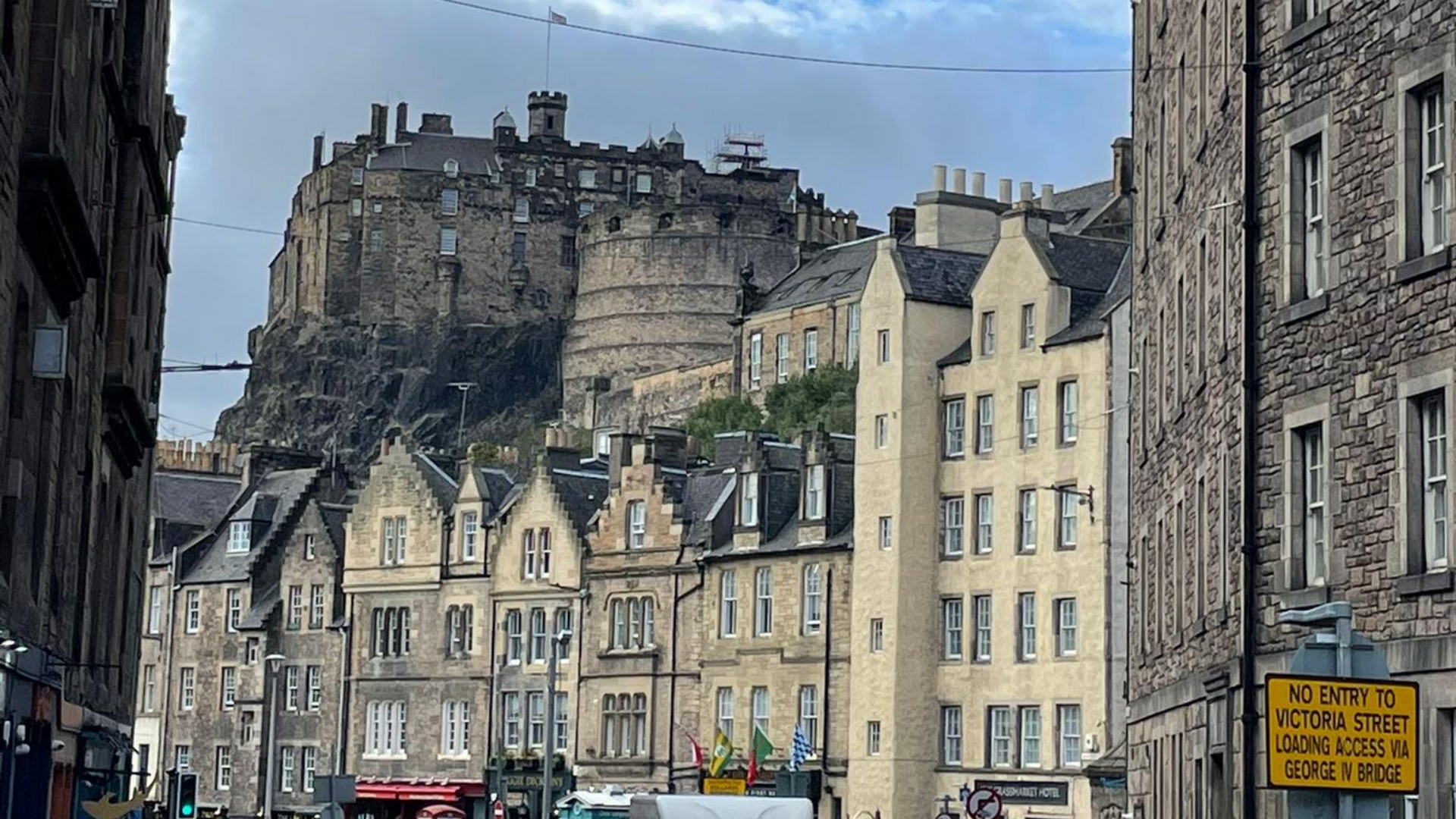


## Important

To avoid disappointment, please do not just leave for a stay abroad without going through the process first, the ASA must be issued **before you go**.

Post-facto agreements are not issued and you would have to organise a new stay.

This applies for both Route 1 and Route 2 (NB: for the second, sorting out your admin with the IO is not sufficient, **you still need your ASA issued by us in advance**)



But since you followed our guidelines,  
everything was straightforward and easy,  
so you are now enjoying your stay abroad!



## **During and after your stay**

### **Important: During the stay**

- Get a signed **letter of reference** (from your placement) or **transcript of records** from the university (study abroad)

### **Important: Upon your return**

- Fill out and submit the online **Questionnaire Destination Abroad**
- Fill out the **Certificate of Completion** and hand it in to *study services*

**Submit all this to the Studierendenservice for further processing (not us)**



# Destination Abroad: On the IES website

INSTITUTE OF ENGLISH STUDIES (IES)	
English Didactics	>
English Literature	
English Linguistics	>
Areas Studies & Language Skills	>
North American Studies	>
LinA-Lab	>
Destination Abroad	▼
About Us	
The Process	
Placement Partnerships	
Interactive map: Placement & contact opportunities	
Student Experiences	
Additional Resources	
FAQs	
Document Download and Stay Abroad Questionnaire	
Info for Potential Partners	
TEFL - The Flipped Classroom	
Study Information	
Staff	>
Contact	

LEUPHANA // INSTITUTES // INSTITUTE OF ENGLISH STUDIES (IES) // DESTINATION ABROAD

## DESTINATION ABROAD

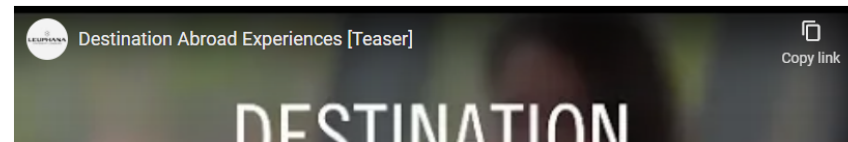
As part of the Leuphana **English teacher training program**, students are required to complete a **three-month study-related stay abroad** in an **English-speaking country** (cf. Rahmenprüfungsordnung Lehramt (May 2018; §3a, Absatz 10) and Nds. MasterVO-Lehr, § 8)

In order for your stay to be recognised, it needs to be **study-relevant**. That means the stay abroad must allow you to experience the English language sufficiently in its socio-cultural context. Such a context enables you to reflect upon what you have learned about language and culture throughout your studies in order to teach this to learners.

Relevant study-related stays abroad in the English-speaking world include:

- Teaching (school, university, informal educational settings)
- Observing/shadowing a teacher (school, university, informal educational settings)
- Studying at an English speaking university
- Working/volunteering at an English speaking association, language course, organisation, business or company

When arranging your stay abroad, you must ensure that it is in an environment where you will be actively using English on a daily basis.



Collection of resources on the website including:

- Regulations and procedures + **FAQs**
- Destination Abroad partner placements
- Links to other helpful resources



# Destination Abroad: On the IES website

LEUPHANA // INSTITUTES // INSTITUTE OF ENGLISH STUDIES (IES) // DESTINATION ABROAD // **PLACEMENT PARTNERSHIPS**

## PLACEMENT PARTNERSHIPS

We have a number of partnerships with institutions who have welcomed Leuphana students in the past. For further information on the teaching assistant and student exchange programme, please visit the [International Office](#). To access their extensive database on student exchange programmes with partnering institutions click [here](#).

CONTACT	COUNTRY	POSITION
<b><i>UNIVERSITIES</i></b>		
<a href="#"><u>University of East Anglia</u></a>	England	Exchange student (*Lehramt English students are favoured in this exchange)
<a href="#"><u>University of Stirling</u></a>	Scotland	Exchange student (*Lehramt English students are favoured in this exchange)
<a href="#"><u>University of Glasgow</u></a>	Scotland	Exchange student (*Lehramt English students are favoured in this exchange, Bachelor only)
<a href="#"><u>University of Limerick</u></a>	Ireland	Exchange student in MA studies
<a href="#"><u>Chandigarh University</u></a>	India	Exchange student (Bachelor only)
<a href="#"><u>University of Mount Union</u></a>	USA	Exchange student
<a href="#"><u>Colorado College</u></a>	USA	Exchange student (Bachelor only)

and many more!

\*List of placement partnerships currently being updated, please check website





# Destination Abroad: On the IES website

LEUPHANA // INSTITUTES // INSTITUTE OF ENGLISH STUDIES (IES) // DESTINATION ABROAD // FAQs

## FAQS

- [I am worried to go abroad because of Covid - what are the rules?](#)
- [Why do I have to go abroad?](#)
- [I have been abroad before. Do I have to go again?](#)
- [What does 'study related' mean?](#)
- [Is it possible to spend the first study-related internship "SPS I" abroad?](#)
- [When is the best time to go?](#)
- [What if my stay abroad overlaps with the beginning of the new semester?](#)
- [Can I take a semester off \(Urlaubssemester\) when going abroad?](#)
- [Can I stay less than three months or split my stay?](#)
- [In which countries can I complete my stay abroad?](#)
- [I want to study abroad. Is that possible?](#)
- [Studying abroad: How do I choose my modules?](#)
- [Does the placement have to be in a pedagogical or school environment?](#)
- [Where can I get financial support?](#)
- [How do I get my stay recognised?](#)
- [I am a native speaker. Do I have to go abroad?](#)

**...important to  
read these!**



## From the FAQs

It is possible to **split the stay** (6 + 6 weeks or 8 + 4 weeks)

When spent **abroad**, **SPS1** or **SPS2** count towards the fulfilment of the stay-abroad requirement

Overall 3 months, with a commitment of at least **25 hours/week**





# So many decisions...

Leuphana Language Game Lab

LinA-Lab

Destination Abroad

About Us

The Process

Placement Partnerships

Interactive map: Placement & contact opportunities

Student Experiences

Additional Resources

FAQs


Document Download and Stay Abroad Questionnaire

Info for Potential Partners


Studieninformationen

Veranstaltungen

## STUDENT EXPERIENCES



Destination Abroad Experiences: Hannah



Destination Abroad Experiences: Hanna



# So many decisions...

North American Studies

Leuphana Language Game Lab

LinA-Lab

Destination Abroad

About Us

The Process

Placement Partnerships

Interactive map: Placement & contact opportunities

Student Experiences

Additional Resources

FAQs

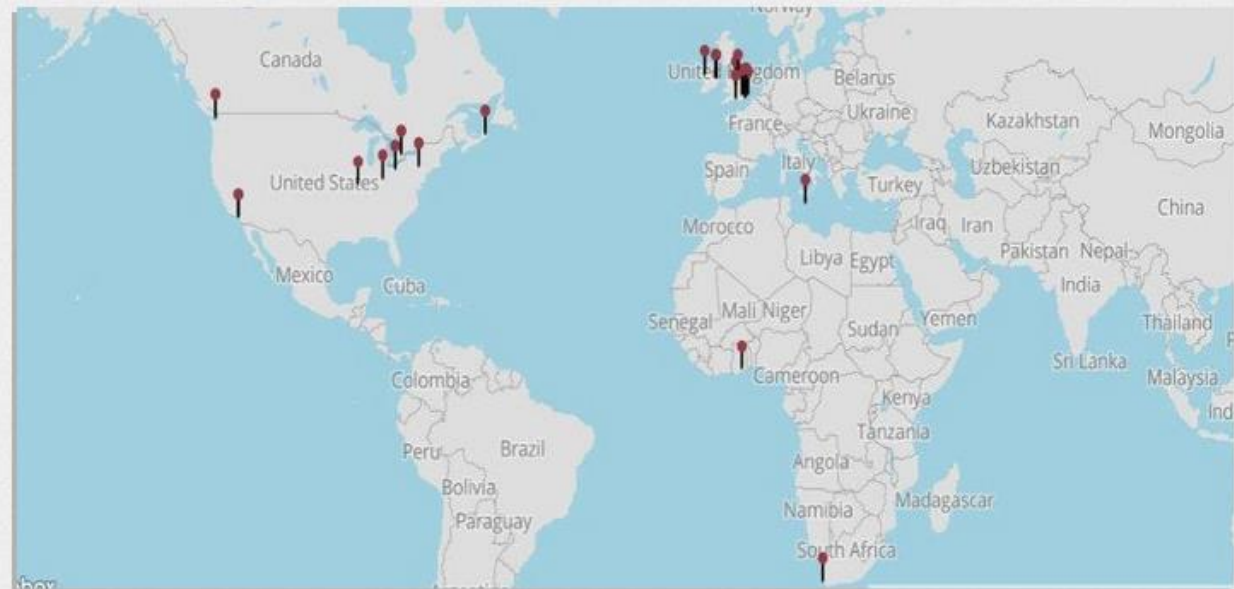
Document Download and Stay Abroad Questionnaire

Info for Potential Partners

Studieninformationen

Veranstaltungen

## INTERACTIVE MAP: PLACEMENT & CONTACT OPPORTUNITIES



Search our **internal log-in area** » reserved exclusively for students of Lehramt Englisch at the Leuphana. Use our interactive map to see where your fellow students have been on their stay abroad, learn of their experiences (also via direct contact) and get some potential placement contacts abroad!



# So many decisions...

## LOGIN

To access the searchable database of experience reports and previous placements developed by Destination Abroad, it is necessary to log-in using the log-in password distributed by Destination Abroad on Destination Abroad posters displayed in the Institute of English Studies or during regular Destination Abroad information sessions.

Username

Password

LOGIN

Username: students

Password: students



# Kombination Schulpraktika + Auslandsaufenthalt

- Grundsätzlich können im B.A. LuL sowohl die SPS 1 als auch die SPS 2 im Ausland absolviert werden. In den LBS-Studiengängen können die Praktika im BA und MEd im Ausland absolviert werden.
- **Option A:** Anerkennung eines an einer Partnerhochschule absolvierten Praktikums (insb. Erasmus+).
- **Option B:** Selbst organisierte Schule im Ausland und Begleitung (+ Prüfung) durch die Leuphana.
  - Zeitraum des Praktikums muss (ungefähr) mit Zeitraum in Lüneburg übereinstimmen.
  - Zum Prüfungszeitpunkt müssen Sie in Lüneburg eingeschrieben sein.
  - Alle Regelungen (z. B. Prüfungsanforderungen) des Praktikums gelten auch im Ausland
- **Immer: Infopaket Praktikum im Ausland lesen + persönlich melden**  
**(timo.beckmann@leuphana.de) >> Dr. Timo Beckmann**



# Auslandspraktika: Fördermöglichkeiten

- Förderung von selbstgesuchten Praktika an Schulen im Ausland, 1-6 Monate, für Lehramtstudierende aller Fächer und Schulformen, Bewerbung direkt beim DAAD: [www.studieren-weltweit.de/lehramt](http://www.studieren-weltweit.de/lehramt)
- Erasmus+ Förderung von selbstgesuchten Praktika im europäischen Ausland, 2-12 Monate, Bewerbung über das IO der Leuphana: [www.uni-hannover.de/eu-praktika](http://www.uni-hannover.de/eu-praktika)
- Förderung und Vermittlung von Sprachassistenzen, 5-11 Monate, Bewerbung direkt beim Pädagogischen Austauschdienst: <https://www.kmk-pad.org/programme/fremdsprachenassistentenzkraefte/studierende-aus-deutschland.html>
- Ansprechperson im **International Center: Eva Voss**hagen









# Thank you!

[destinationabroad@leuphana.de](mailto:destinationabroad@leuphana.de)