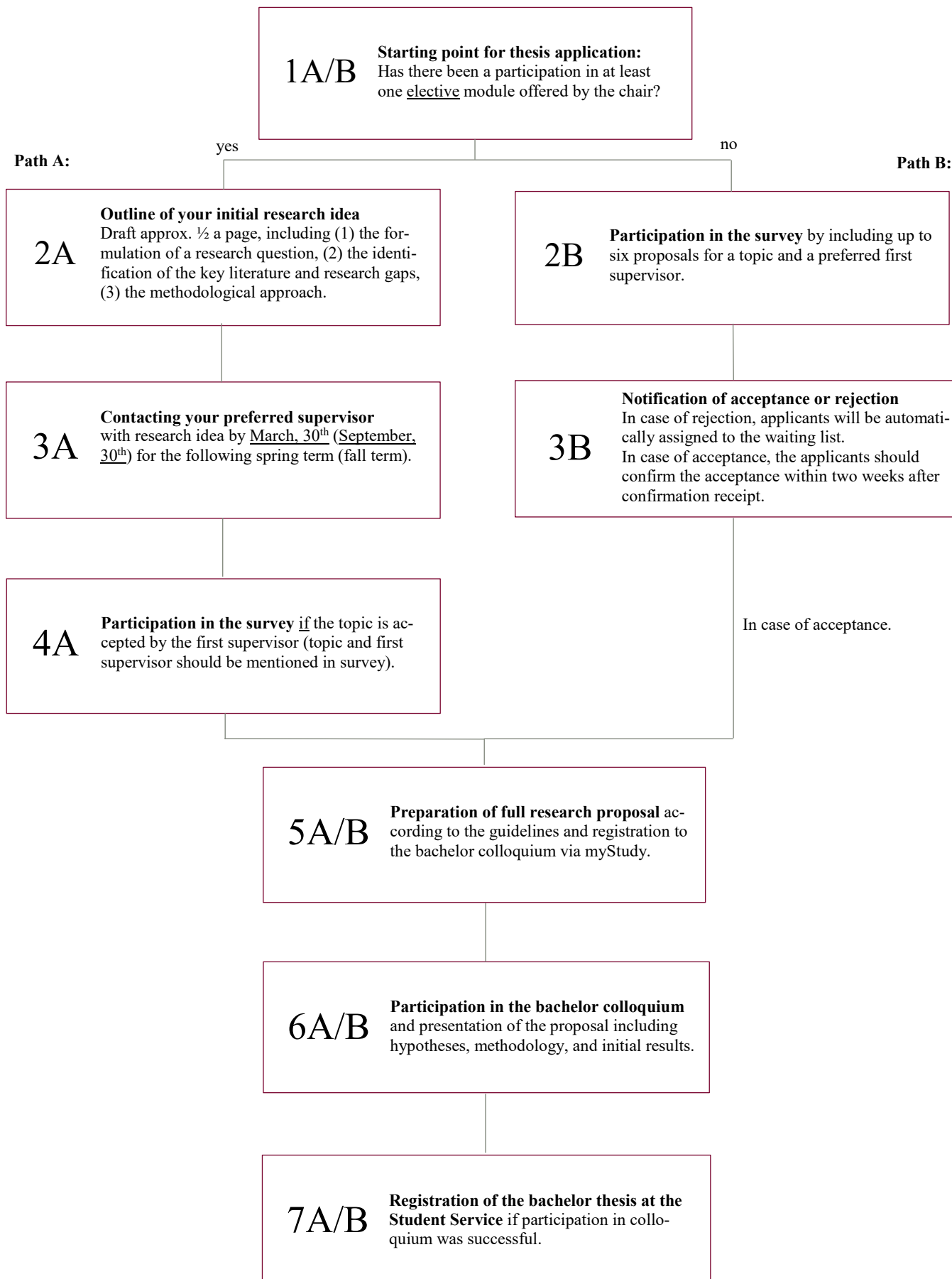


## **General information on writing a thesis at the Chair of Corporate Finance and Managerial Accounting**

The present guide provides information on the application process for a bachelor thesis at the Chair of Corporate Finance and Managerial Accounting. Please read these instructions carefully and adhere to them to ensure a successful application. Applications that are not prepared according to these instructions may be rejected.

Generally, we recommend authoring collaborative theses that build on the participation of multiple students. Therefore, only one thesis per group needs to be submitted and each author's contribution should be declared. Please form a group before going through the application process if you decide in favor of this collaborative approach. It is also possible to submit single-authored theses.

Theses should be authored in English. This also refers to respective colloquium presentations. The following flow chart displays the application process. Afterward, detailed information on each phase of the application process is provided.



## **1 A/B: Starting point for thesis application at the Chair of Corporate Finance/Managerial Accounting**

This phase represents the starting point in the thesis application process. We expect that you have already familiarized yourself with the topics of interest (in an elective course) and the research methods and theories (in a seminar) of your preferred supervisor (at least one group member in collaborative theses). Applications with prior participation in one of the supervisor's modules will be given preference. Students may substitute seminars with equivalent seminars from other chairs (e.g., a seminar in empirical accounting research may substitute a seminar in empirical finance research, and vice versa).

Students without prior attendance in at least one of the above-described modules are likely to be assigned either one of the student's proposed topics, or a topic selected by the chair.

### **Detailed information for path A:**

#### **2A: Initial research phase**

You are in this phase of the application process if you have already attended a seminar of your supervisor and want to continue research in this field in your thesis. Therefore, you identify and elaborate a topic of interest that adheres to the research interest of the chair.

A topic should meet the following criteria:

- The topic should be related to the research undertaken by members of the chair or topics taught in the modules. Please check the following link for further information on current research projects of the Chair of Corporate Finance: <https://www.leuphana.de/institute/imaf/personen/judith-schneider.html> and Managerial Accounting: <https://www.leuphana.de/institute/imaf/personen/rainer-lueg.html>
- The topic should be novel and address the extant literature and prevalent theories.
- The topic should be analyzable by conducting bibliometric (e.g., systematic literature reviews), statistical, or theoretically-underpinned conceptual analyses.

#### **3A/4A: Contacting the preferred supervisor**

You enter this phase when you have finished initial research, allowing you to present the relevance of your topic of interest to your supervisor. Please send a well-written outline of this topic (approx. ½ page).

- Please contact the preferred supervisor by March, 30<sup>th</sup> (September, 30<sup>th</sup>) for the following spring term (fall term). Please state your preferred topic, including the research question and the methodological approach (bibliometric analysis, empirical analysis, theoretically-underpinned conceptual analyses). Please also indicate whether the thesis should be a group work by stating all names and one E-Mail address of correspondence. The chair will assign you a second supervisor and provide you feedback on the feasibility of the proposed topic after the above-stated deadlines. The chair might suggest alternative topics in case your proposed topic is unfeasible.

If your topic is accepted, please participate in the survey: <https://survey.leuphana.de/index.php/169375?lang=de> by stating your supervisors and your topic. Even though you decide for a collaborative thesis, please participate in the survey individually.

### **Detailed information for path B:**

#### **2B/3B: Participation in the survey**

You are in this phase of the application process if you did not attend a seminar of your preferred supervisor prior to the thesis but still want to conduct research in respective research fields. Therefore, please participate in the survey <https://survey.leuphana.de/index.php/169375?lang=de> by suggesting up to six topics. Please also indicate your preferred methodological approach (bibliometric, statistical, conceptual).

#### **Exemplary topics:**

*Bibliometric analysis: value-based management*

*Empirical analysis: sustainable performance measurement*

*Empirical analysis: behavioral finance*

After the submission of the survey, you will receive either an acceptance or a rejection. In case of a rejection, your name will be automatically added to the waiting list. In case of an acceptance, please confirm your acceptance within two weeks. The chair might suggest alternative topics in case your proposed topic is unfeasible.

### **Detailed information relevant for both paths:**

#### **5A/B: Preparation of the research proposal**

You are in this phase of the application process if your application was successful and your topic has been accepted. Please register to the thesis colloquium via myStudy and note the

submission deadlines and session dates. To pass the colloquium, you have to submit a full, written proposal to your supervisor. Upon acceptance of the written proposal, you will be asked to present the proposal in one of the colloquium sessions. Please note that there is only a limited number of presentation dates for each semester.

The proposal should comprise the following elements:

1. Introduction:
  - Identification of a research problem
  - Formulation of a research question
2. Theory
  - Elaborate why the chosen theory is likely to provide a good explanation for your phenomenon under investigation
  - For empirical papers: draft hypotheses (or propositions for literature reviews)
3. Methodology
  - Describe the method used to address the research question and provide details (e.g., how does the data look like? Why is the dataset appropriate for answering the research question?)
4. Expected/initial findings
5. Originality and contribution
  - Briefly describe how your research contributes additional value to the extant literature
6. References

### **6A/B: Participation in colloquium**

Please prepare a presentation of your proposal including the research question, development of the hypothesis/hypotheses, information on the dataset, initial results, and contribution to research. In case of successful participation and presentation in the colloquium, you can officially register the thesis at the Student Service. In total, you will have nine weeks to prepare the thesis after successful registration. In case of inadequate performance in the colloquium, the chair reserves the right to withdraw a confirmation of supervision. In this case, the thesis will not be registered.