

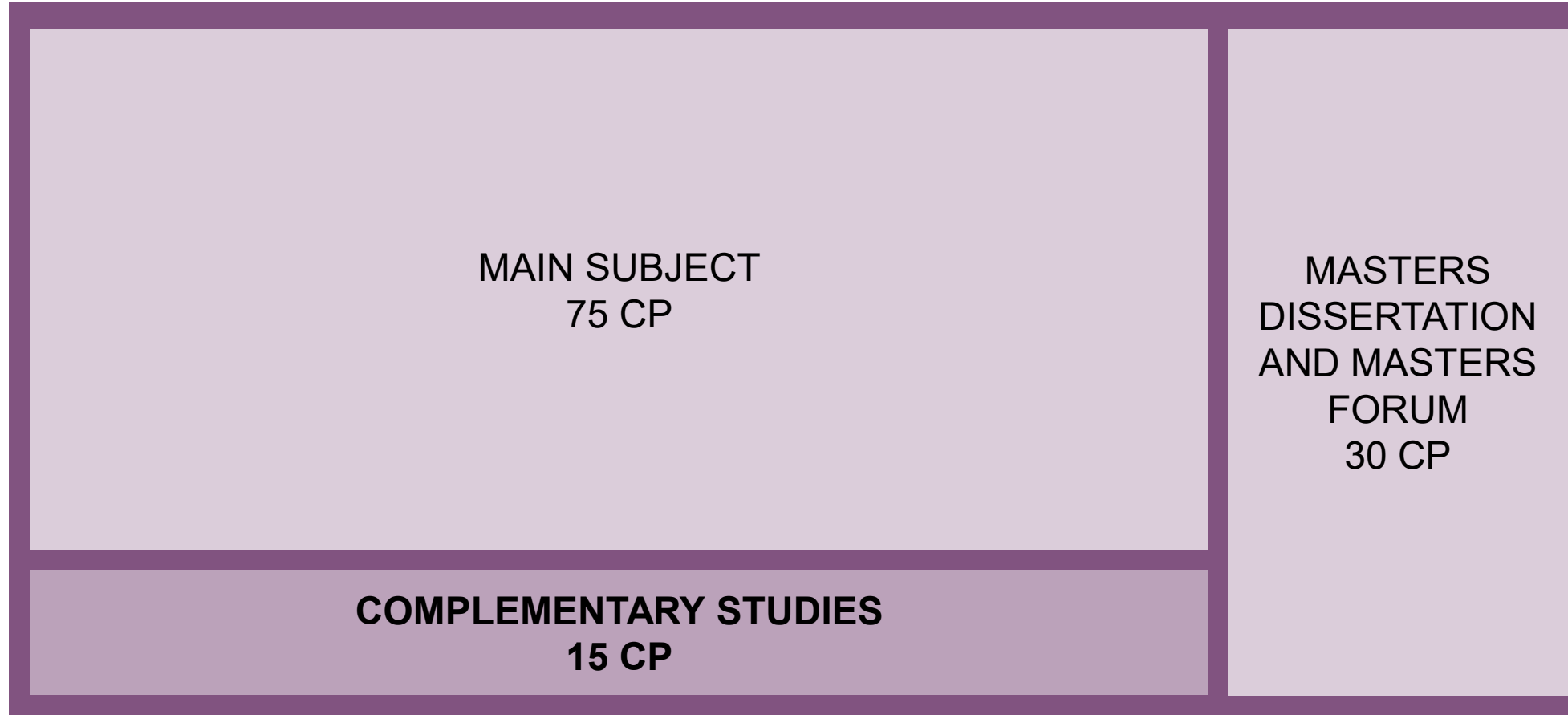
# WELCOME AT LEUPHANA GRADUATE SCHOOL COMPLEMENTARY STUDIES

Graduate School Opening Days 2024

→ Claudia Echelmeyer



# STRUCTURE OF OUR MASTERS PROGRAMMES AT LEUPHANA GRADUATE SCHOOL



\*Joint and double degree programmes may have a different study structure.



# OUR MASTERS PROGRAMMES – YOUR POTENTIAL FELLOW STUDENTS

MASTER'S COMPLEMENTARY STUDIENS  
& DOCTORAL TRACK

## GOVERNANCE AND LAW

- International Economic Law (LL.M.), Double Degree\*
- International Law of Global Security, Peace and Development (LL.M.), EMJM Joint Degree\*
- Public Affairs & Democracy (M.Sc.)\* **New Programme**
- Public Affairs & Economics (M.Sc.)\* **New Programme**
- Law (LL.M.)

## KULTURWISSENSCHAFTEN

- Culture and Organization (M.A.)\*
- Critical Studies: Art, Theory, History (M.A.)
- Media and Digital Studies (M.A.)
- Double Degree Options in 3 Programmes

## LEHRKRÄFTEBILDUNG // TEACHER EDUCATION

- Education for Primary Schools (M.Ed.)
- Education for Secondary Schools (M.Ed.)
- Vocational Schools – Social Pedagogy (M.Ed.)
- Vocational Schools – Business and Economics (M.Ed.)

## MANAGEMENT

- Management & Data Science (M.Sc.)\*
- Management & Engineering (M.Sc.)
- Management & Entrepreneurship (M.Sc.)\*
- Management & Sustainable Accounting and Finance (M.Sc.)\*
- Double Degree Options in 2 Programmes

## PSYCHOLOGY

- International Joint Master of Research in Work and Organizational Psychology (M.Sc.), Joint Degree\*
- Psychology & Sustainability (M.Sc.), Double Degree\*

## SUSTAINABILITY

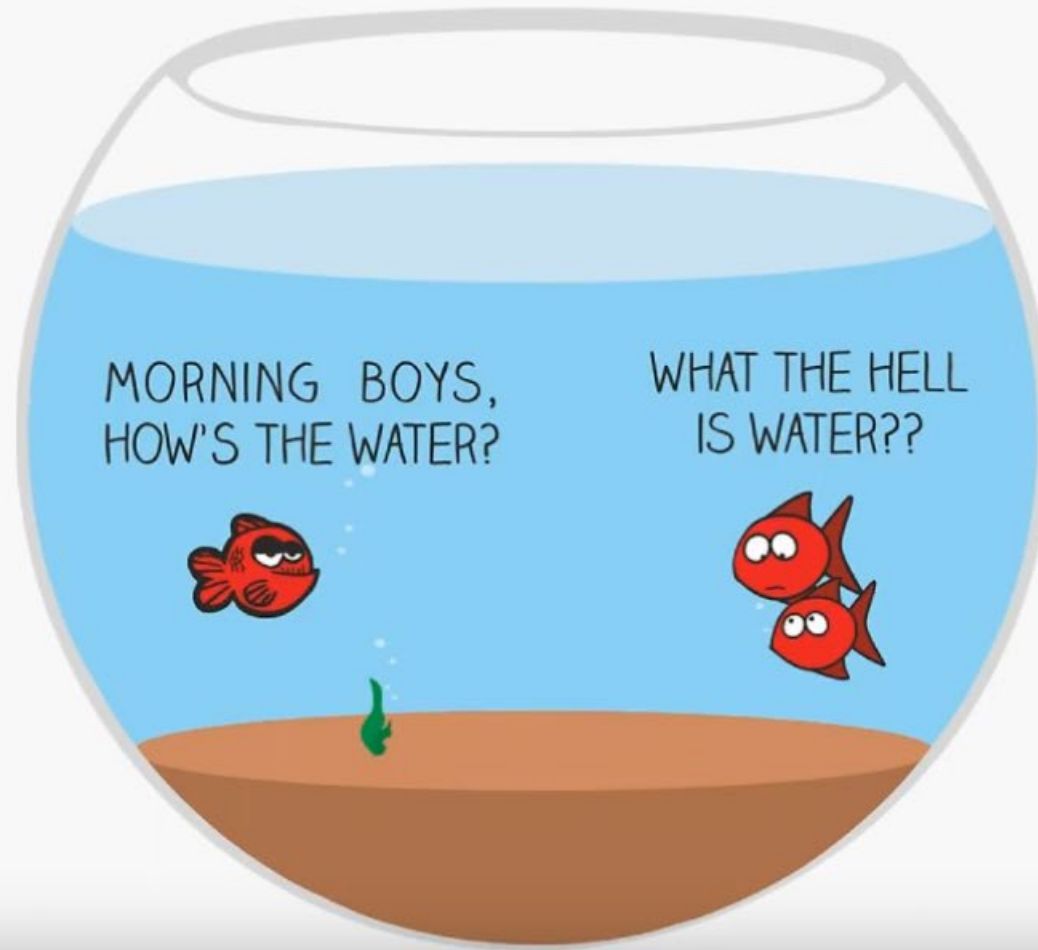
- Sust. Sc.: Ecosystems, Biodiversity and Society (M.Sc.)\*
- Sust. Sc.: Entrepreneurship, Agency and Leadership (M.Sc.)\*
- Sust. Sc.: Governance and Law (M.A.)\*
- *Sust. Sc.: Resources, Material Flows and Chemistry (M.Sc.)\**  
[Start WiSe 2025/26]

**4 New Programmes**

\* English-taught Programmes



# WHY COMPLEMENTARY STUDIES?



- Developing professional routines
- Developing creative concepts
- Experience collegiality and self-efficacy
- Recognising values and norms
- Try out new forms of work

Source: [https://youtu.be/vAYOI14G\\_Ts](https://youtu.be/vAYOI14G_Ts)



# WHY COMPLEMENTARY STUDIES?

Future skills you will need in your career by 2030!

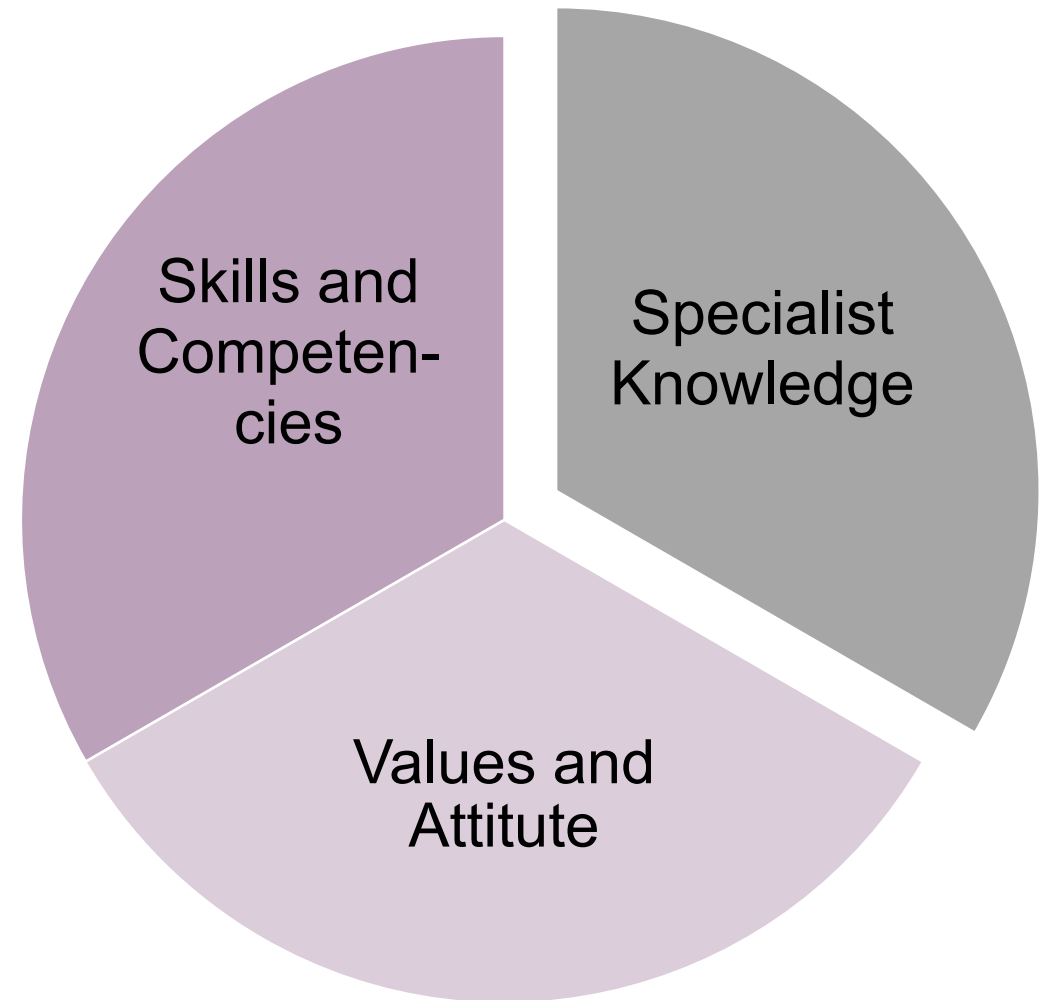
Cognitive Flexibility

Emotional and social intelligence

Digital literacy and computational thinking

Creative and innovative mindset

Judgement and decision-making



Source: <https://www.topuniversities.com/student-info/careers-advice/future-skills-youll-need-your-career-2030>



# IDEA AND STRUCTURE COMPLEMENTARY STUDIES

Semester 1:

**Engaging with Knowledge and Sciences**

Semester 2:

**Reflecting on Research Methods**

Semester 3:

**Connecting Science, Responsibility, and Society**

- Up to 15 interdisciplinary seminars in each module
- All 5 research schools contribute
- Seminar groups could be composed of students from more than 10 different master's programmes
- Experimental formats are highly welcome

Website: <https://www.leuphana.de/en/graduate-school/study-concept/complementary-studies-program.html>



# ENGAGING WITH KNOWLEDGE AND SCIENCES

## 15 SEMINARS 1/2

- Era and Technology. From stone age to light year. Artificial Intelligence – Understanding opportunities and limitations across disciplines
- Artificial Intelligence – Understanding opportunities and limitations across disciplines
- Das Soziale und das Politische – Zum Spannungsverhältnis zweier Begriffe und zweier Disziplinen (*German Seminar*)
- Designing for Future Impact: End-User Integration, Innovation and Entrepreneurship
- Developing entrepreneurial solutions in the context of HEYHO
- Gender and Inequality Matter for Entrepreneurship
- Inequalities unveiled: Theorizing organizations from gender and diversity perspective
- Judicial Politics



# ENGAGING WITH KNOWLEDGE AND SCIENCES

## 15 SEMINARS 2/2

- Knowing Colour
- Philosophy of Social Science (PhD seminar open for qualified Master students)
- The diffusion and variation of organizational practices
- Theories of Law
- Think Mathematically, Act Algorithmically: Modelling and Control of Dynamical Systems using Linear and Nonlinear Differential Equations (open for PhD students)
- Think Mathematically, Act Algorithmically: Numerical Algorithms and Methods to Identify Dynamical Systems for Data Analysis and Reconciliation (PhD seminar open for qualified Master students)
- Thinking Space – Space for Thinking: Engaging Philosophy with Architecture





# GENDER-DIVERSITY CERTIFICATE (GDC)

Please register by using this [online form](#)!  
With registration, you have the opportunity to make use of the preferential registration (for one certificate course per semester).  
More information is available on the [website](#)!

This GDC program allows you to

- Consider equal opportunities and gender justice as contemporary topics in social and professional contexts
- Gain a basic introduction into the theories and methods of gender, diversity, and intersectionality research
- Question the norms and stereotypical attributions
- Reflect on and assess the current societal discourse and the strategies on institutionalization regarding diversity and equality
- Strengthen and expand your key qualifications in the areas equal opportunities, equality, and diversity management



# SUSTAINABLE ENTREPRENEURSHIP CERTIFICATE (L-SEC)

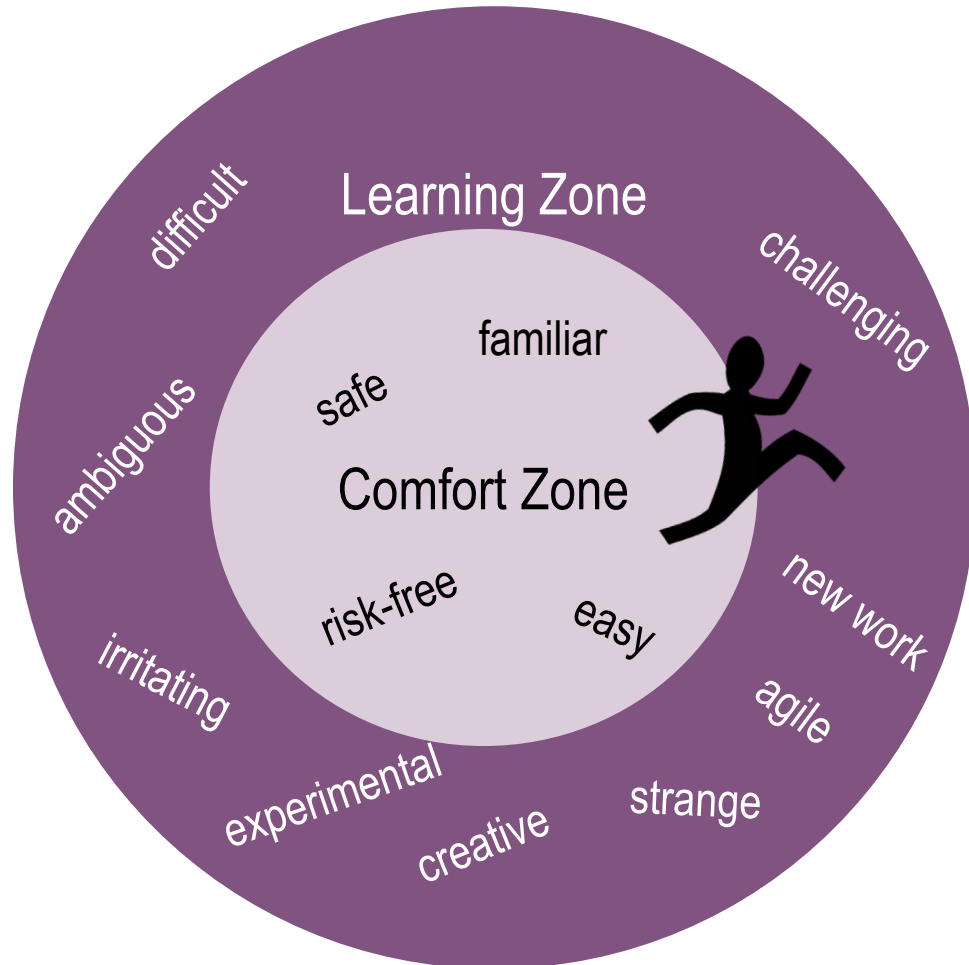
Please register by sending an email asap including your name, student number and preferred starting module to:  
[steffen.farny@leuphana.de](mailto:steffen.farny@leuphana.de).  
More information is available on the website!

The L-SEC program offers

- A hands-on experience to develop an entrepreneurial skill-set for tackling sustainability problems in innovative ways
- Combining experiential and reflective learning as part of your regular study program
- Gaining a basic introduction to theories and methods of sustainability & entrepreneurship research
- Acquire sustainability competencies for solving sustainability problems and fostering sustainable development
- Acquire entrepreneurial competencies for proactively identifying, developing and exploiting opportunities for new solutions
- Acquire emotional competencies for recognizing, interpreting and constructively responding to your own and other people's experiences



# GET OUT OF YOUR COMFORT ZONE!



Take and get the best out of your studies and Leuphana Graduate School is very pleased to support you in this!

- take responsibility
- gain skills that suit you and help you in your professional – and also private – life
- gain self-awareness and team experience
- think outside the box
- become a problem-solver - in business and research



Source: <https://www.colourbox.dk/billede/en-guldfisk-springe-ud-af-fiskebowl-billede-2219637>



# ANY QUESTIONS?



# CONTACT

PROF. DR. MARKUS REIHLEN | Academic Director Graduate School |  
Universitätsallee 1 | 21335 Lüneburg | Germany  
Fon +49.4131.677-2350 | [markus.reihlen@leuphana.de](mailto:markus.reihlen@leuphana.de)  
[www.leuphana.de/gs](http://www.leuphana.de/gs)



CLAUDIA ECHELMEYER | Graduate School |  
Universitätsallee 1 | 21335 Lüneburg | Germany  
Fon +49.4131.677-2401 | [komplementaer.gs@leuphana.de](mailto:komplementaer.gs@leuphana.de)  
[www.leuphana.de/gs](http://www.leuphana.de/gs)

