

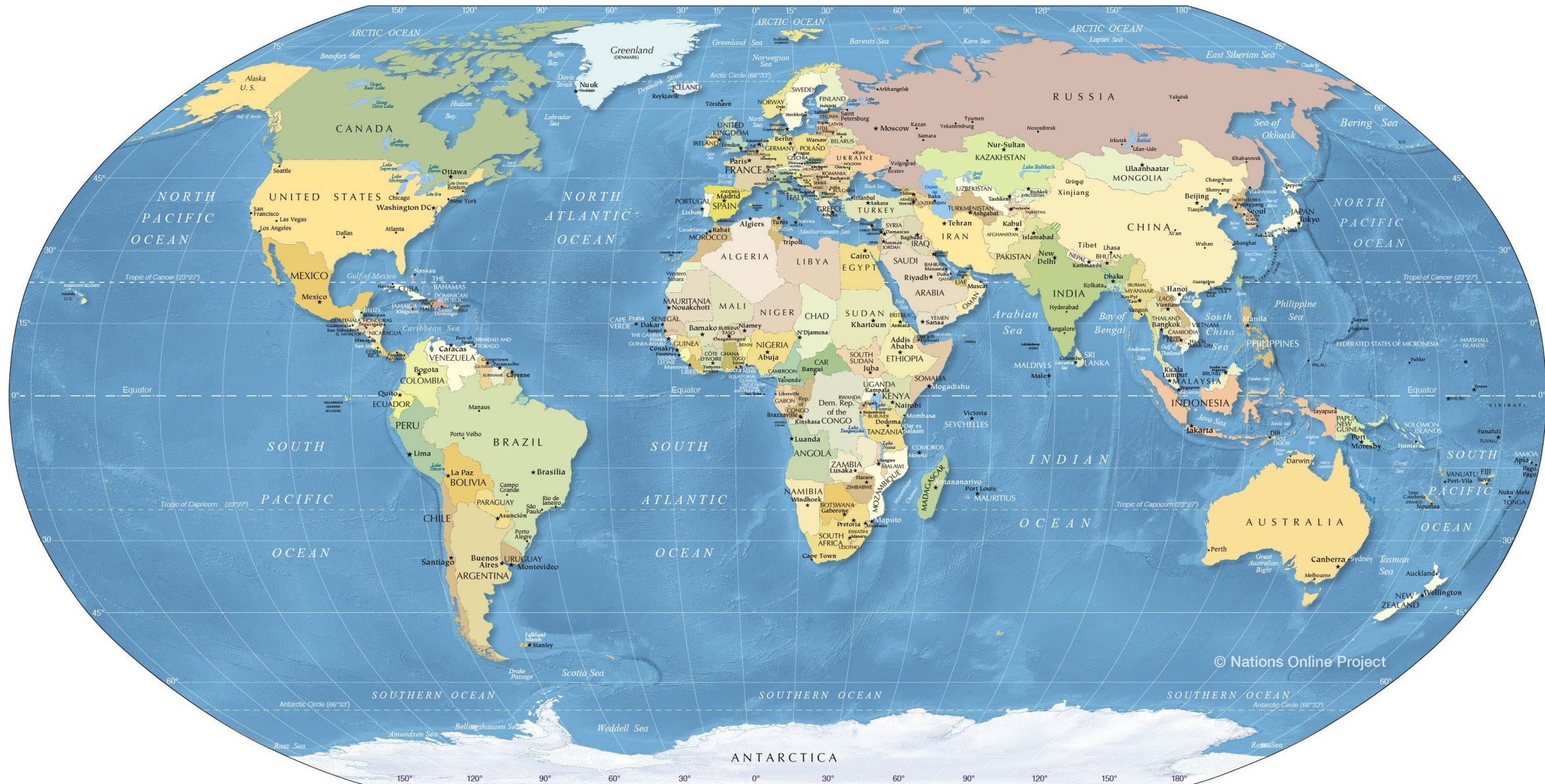
# PUBLIC ECONOMICS, LAW AND POLITICS

MA programme, INFORMATION DAY  
20 April 2023  
Professor Tobias Lenz





# States are the only available form of legitimate political organization in the modern world





# IDEA AND BACKGROUND

The effectiveness and legitimacy of modern states is largely determined by the complex interplay of politics, law, and economics. Due to globalization, this interplay is subject to dynamic processes of change, leading to altered forms of statehood and new patterns in the relations between the state, society, and markets.

This MA program provides a comprehensive view of the myriad interactions between politics, law and economics – including opportunities for individual in-depth studies in

- Political Science,
- Public Law,
- Economics, and / or
- Development Theory and Policy.



# PARTICIPATING INSTITUTES

## **School of Public Affairs**

Institute of Economics (IVWL) [www.leuphana.de/en/institutes/ivwl](http://www.leuphana.de/en/institutes/ivwl)

Institute of Political Science (IPW) [www.leuphana.de/en/institutes/ipw](http://www.leuphana.de/en/institutes/ipw)

Leuphana Law School (LLS) [www.leuphana.de/institute/lis](http://www.leuphana.de/institute/lis)

## **Faculty of Sustainability**

Institute of Sustainability Governance (INSUGO) [www.leuphana.de/en/institutes/insugo](http://www.leuphana.de/en/institutes/insugo)

# AGENDA

Curriculum

Study abroad

Entry requirements

Career prospects

Leuphana University campus tour

# CURRICULUM

1 <sup>st</sup> Semester	2 <sup>nd</sup> Semester	3 <sup>rd</sup> Semester	4 <sup>th</sup> Semester
<b>RESEARCH PERSPECTIVES</b> Methods of Public Economics, Law & Politics I + II/Masters Forum I [3 x 5 CP]			<b>MASTER THESIS + MASTERS FORUM II</b> [25 + 5 CP]
<b>Electives in the field of Politics/Public Economics/Law/Development Theory and Policy</b> [6 x 5 CP]			
<b>Foundation Modules</b> [2 x 5 CP]	<b>State, Market and Civil Society</b> [10 CP]	<b>Governance, Democracy and Public Policy</b> [10 CP]	
<b>COMPLEMENTARY STUDIES</b> Engaging with Knowledge and Sciences/Reflecting on Research Methods/Connecting Science, Responsibility and Society [3 x 5 CP]			

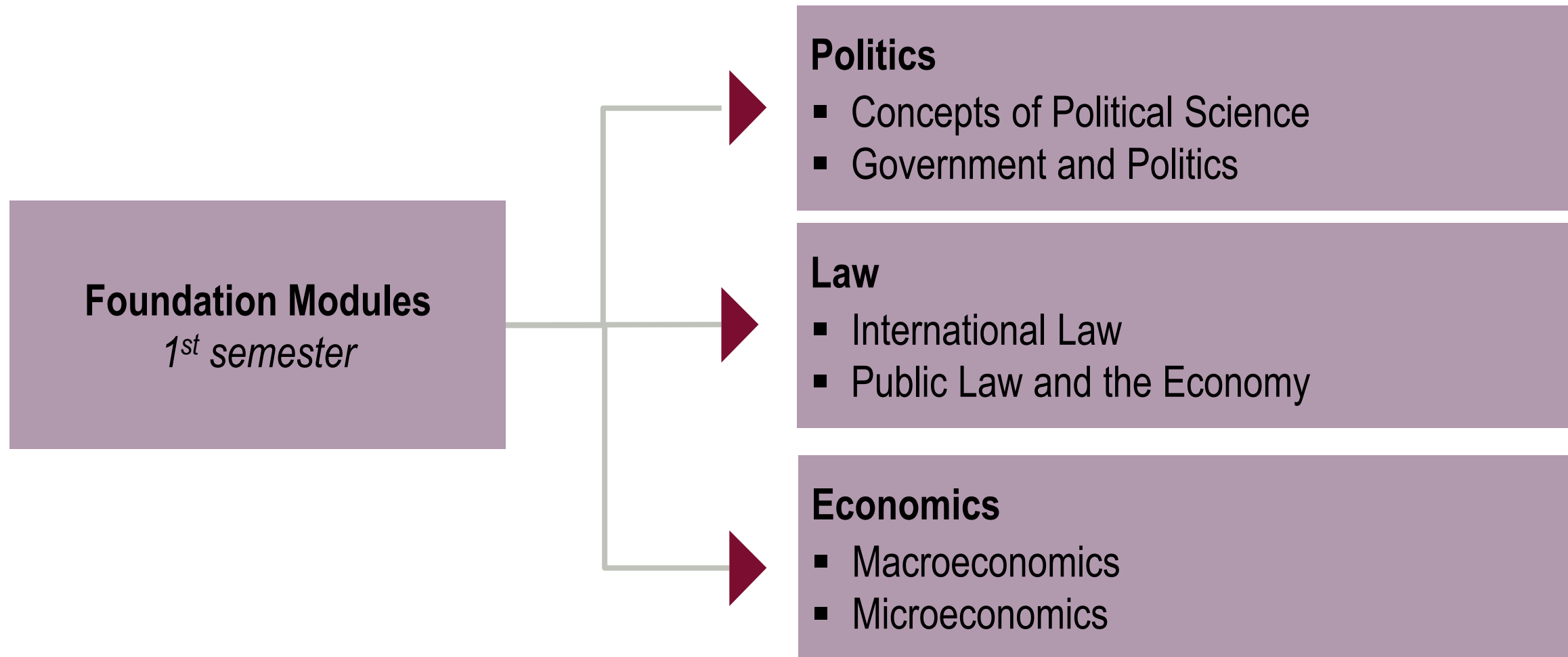
©LEUPHANA

Electives: 6 out of 12 electives, including at least one elective from each of the three subjects: Economics, Law, and Politics.



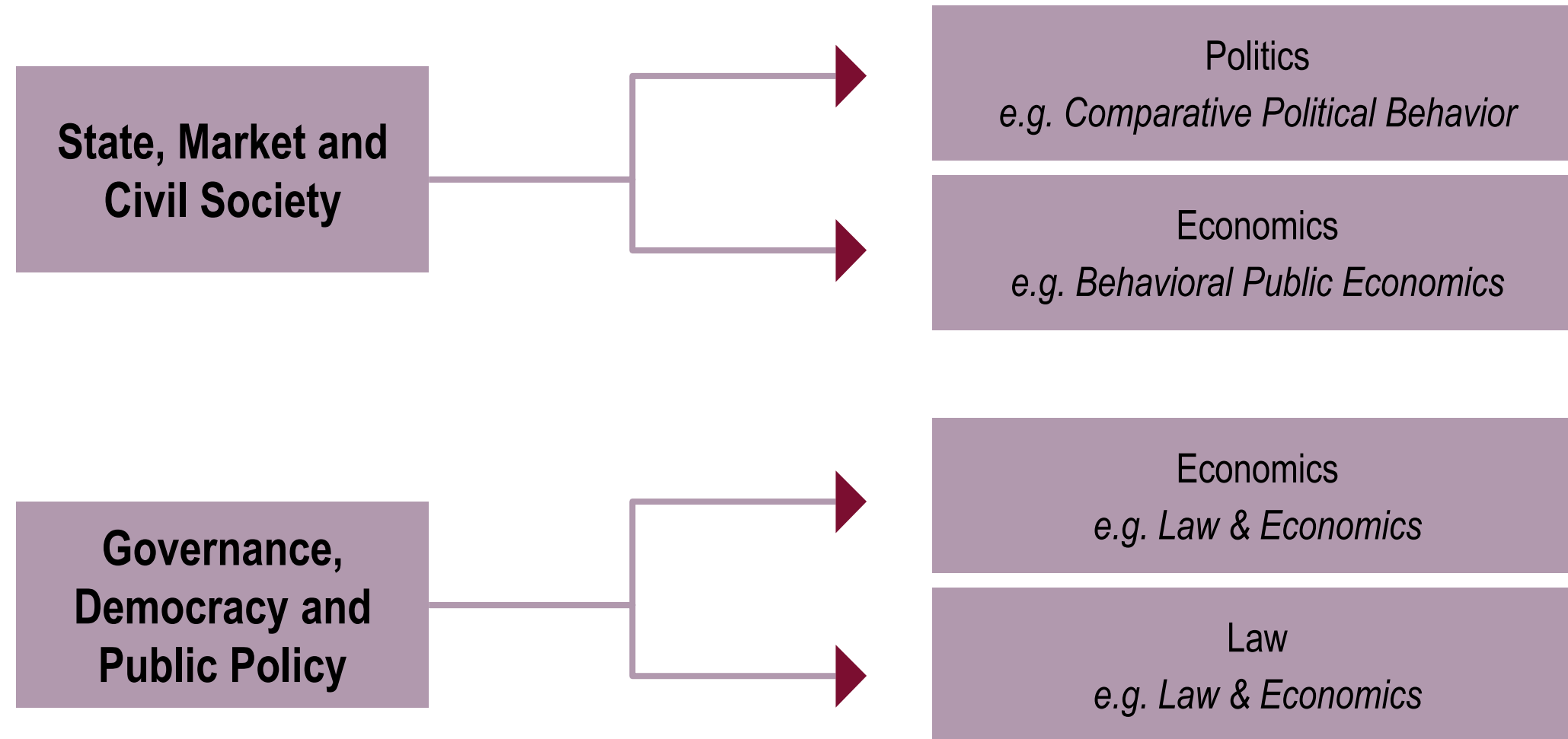


# FOUNDATION MODULES





# INTEGRATION MODULES





# ELECTIVES

6 out of 12 electives including at least one elective each from Economics, Law and Politics.

## 1<sup>st</sup> semester

- Theories and Methods of Comparative Political Science (Politics)
- European Law (Law)
- Public Economics I: Public Finance and Public Policy (Economics)
- Development Economics: Theory, Policy and Evidence (Development theory and policy)

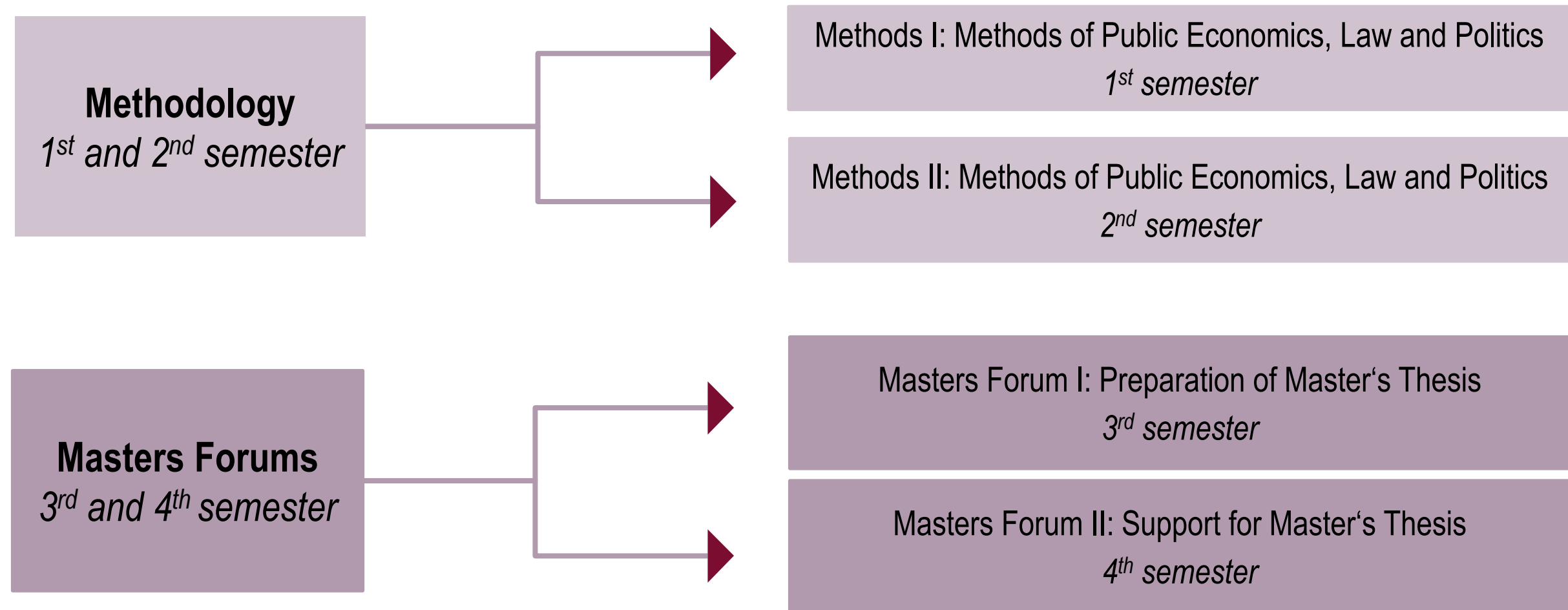
## 2<sup>nd</sup> semester

- Theories of Democracy (Politics)
- Public Economic Law (Law)
- Public Economics II: International Economics and Trade Policy (Economics)
- Applications and Cases in International Development I (Development theory and policy)

## 3<sup>rd</sup> semester

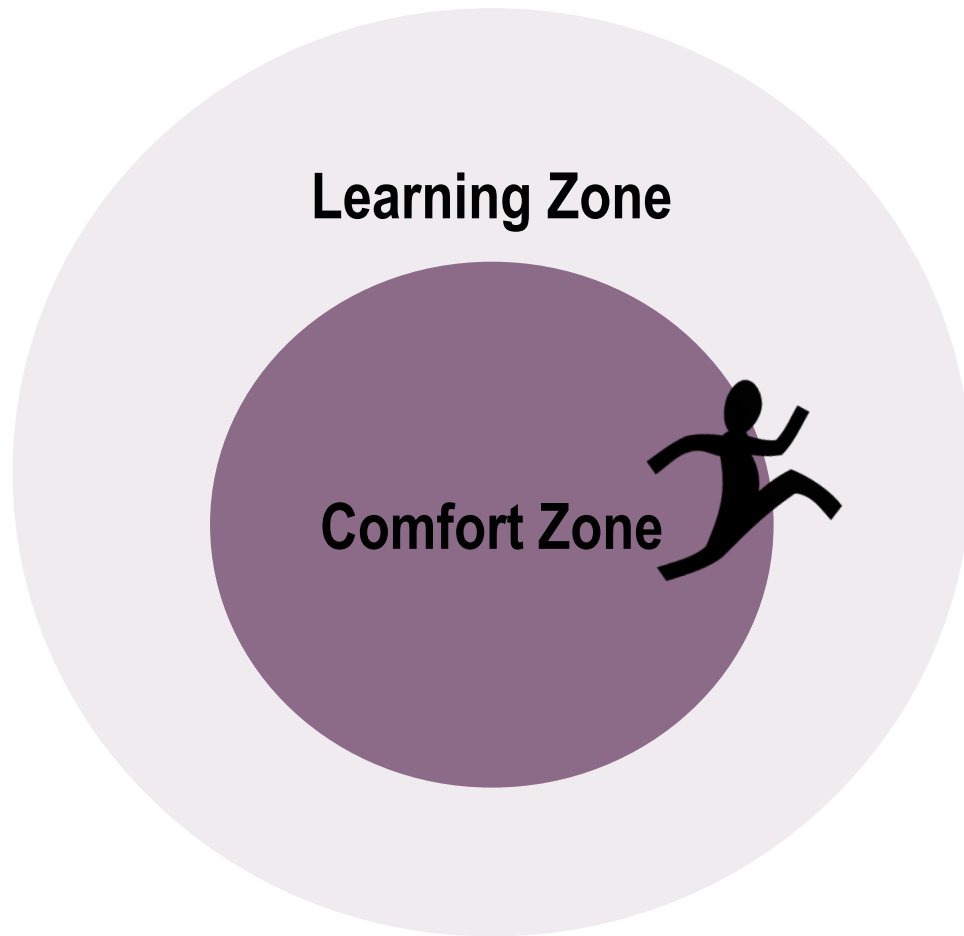
- International Relations and Democracy (Politics)
- Constitutional Theory and Law (Law)
- Public Economics III: Labor Market and Social Policy (Economics)
- Applications and Cases in International Development II (Development theory and policy)

# METHODOLOGY AND MASTERS FORUMS



# COMPLEMENTARY STUDIES

A challenging experience for future scientists and employees



”



*The Complementary Studies showed many of us that students of Engineering, Business Economics or Cultural Studies all experience very different challenges and approaches to science because we are trained in our subject-specific ways. It can be a real revelation to see how strong our individual patterns of thinking are.*

MATTHIAS LUND, Master in Culture, Arts and Media



# ERASMUS EXCHANGE PROGRAMMES

Politics	France	Université Paris-Est Créteil /Frankreich
	Poland	Jagiellonian University   University of Wroclaw
	Romania	University of Bucharest
	Slovenia	University of Ljubljana (Social and behavioural sciences)
	Croatia	University of Zagreb
	Turkey	Marmara University

Economics	Switzerland	Universität Luzern
	Turkey	Marmara University
	Italy	Università degli Studi di Roma 'Tor Vergata'

More information can be found at: <https://www.leuphana.de/en/services/io/study-abroad.html>

**+ Free Mover**  
*Individual study abroad*



# ENTRY REQUIREMENTS

## (1) Bachelor's degree

- Proof of **60 Credit Points** according to ECTS (CP) from course-specific modules in the following disciplines: **Political Science, Law, Economics, or from an interdisciplinary degree course** that mainly consists of the three subjects.
- If you have not yet completed your Bachelor's degree, proof of successful completion of at least 81% of the required total credits (e.g. at least 145 CP in a 180 CP course)

## (2) Proof of English Language Skills

More information on how to apply and on the selection procedure can be found at

[www.leuphana.de/en/graduate-school/master/apply](http://www.leuphana.de/en/graduate-school/master/apply)

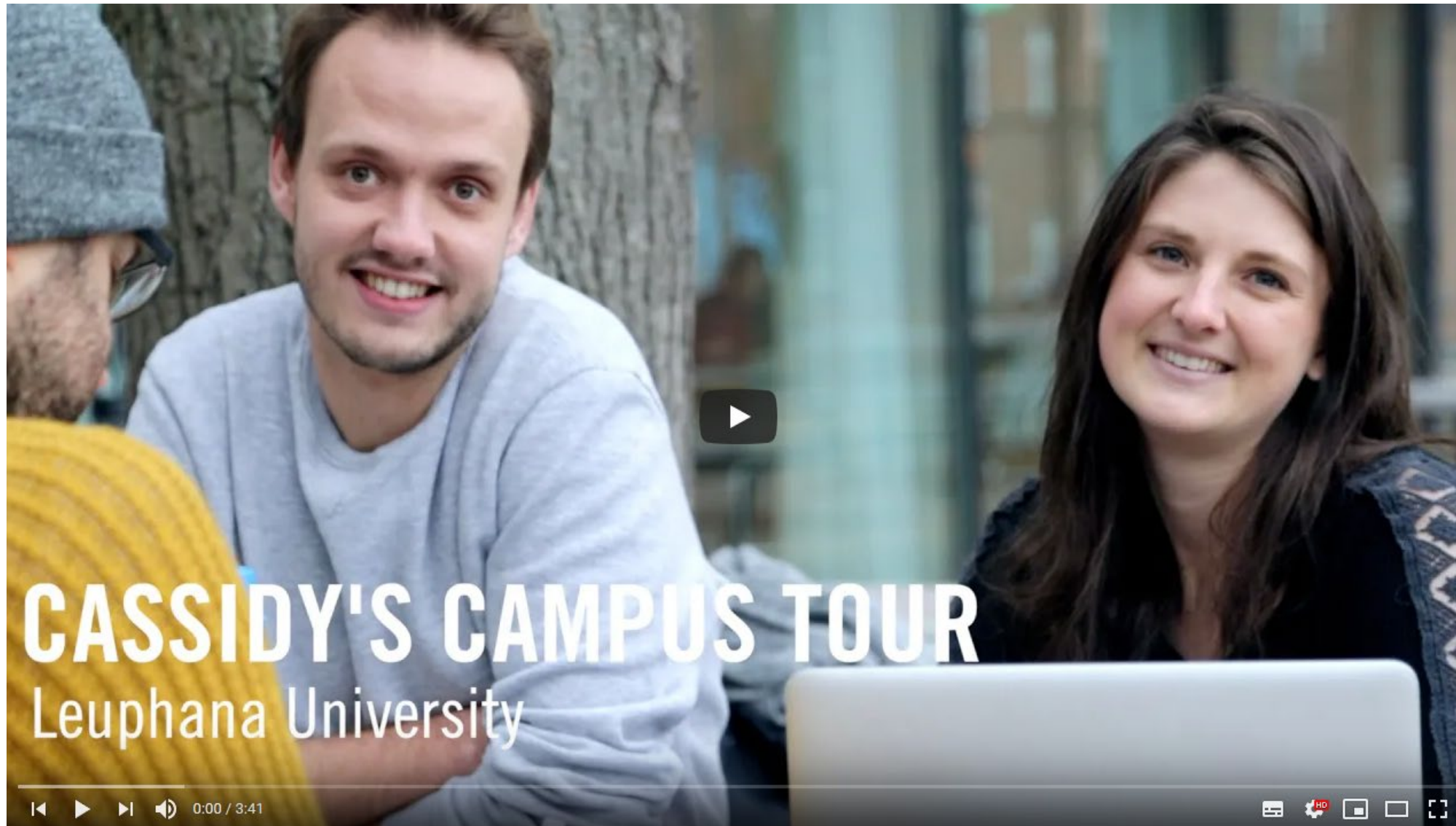
# CAREER PROSPECTS

Upon completion of the programme, the degree of a **Master of Arts (M.A.)** will be assigned.

The degree provides a science-based, interdisciplinary, and problem-oriented academic training in the field of public economics, law, and politics. Based on their profile, graduates have employment opportunities in the following fields:

- Occupation in the political-administrative sector, e.g., in governmental departments, international or supranational institutions, and policy consulting institutions
- Occupation in the economy
- Occupation in academic research, e.g., research institutions focussing on one or more of the three disciplines
- ...

# LEUPHANA UNIVERSITY CAMPUS TOUR



[youtu.be/xJrJq8pwQNE?list=TLPMjUwMzlwMjCa-P3BMd9rFA](https://youtu.be/xJrJq8pwQNE?list=TLPMjUwMzlwMjCa-P3BMd9rFA)



# AT A GLANCE

<b>Degree awarded</b>	Master of Arts (M.A.)
<b>Extent</b>	120 credits, according to ECTS
<b>Duration</b>	2 years / 4 semesters
<b>Course language</b>	English
<b>Application deadline</b>	1 June
<b>Starting date</b>	1 October
<b>No of places</b>	40
<b>Study abroad</b>	strongly encouraged, in particular in the 3 <sup>rd</sup> semester <a href="http://www.leuphana.de/en/services/io/study-abroad">www.leuphana.de/en/services/io/study-abroad</a>
<b>Semester fees</b>	approx. EUR 370 / semester (including public transport)



# CONTACT INFORMATION

PROFESSOR TOBIAS LENZ | Program Director |  
tobias.lenz@leuphana.de

Dr. Elena Kropacheva | Program Coordinator |  
master-pelp@leuphana.de

MATS KAHL | Alumnus |  
mkahl@leuphana.de

» [www.leuphana.de/master-pelp](http://www.leuphana.de/master-pelp)

