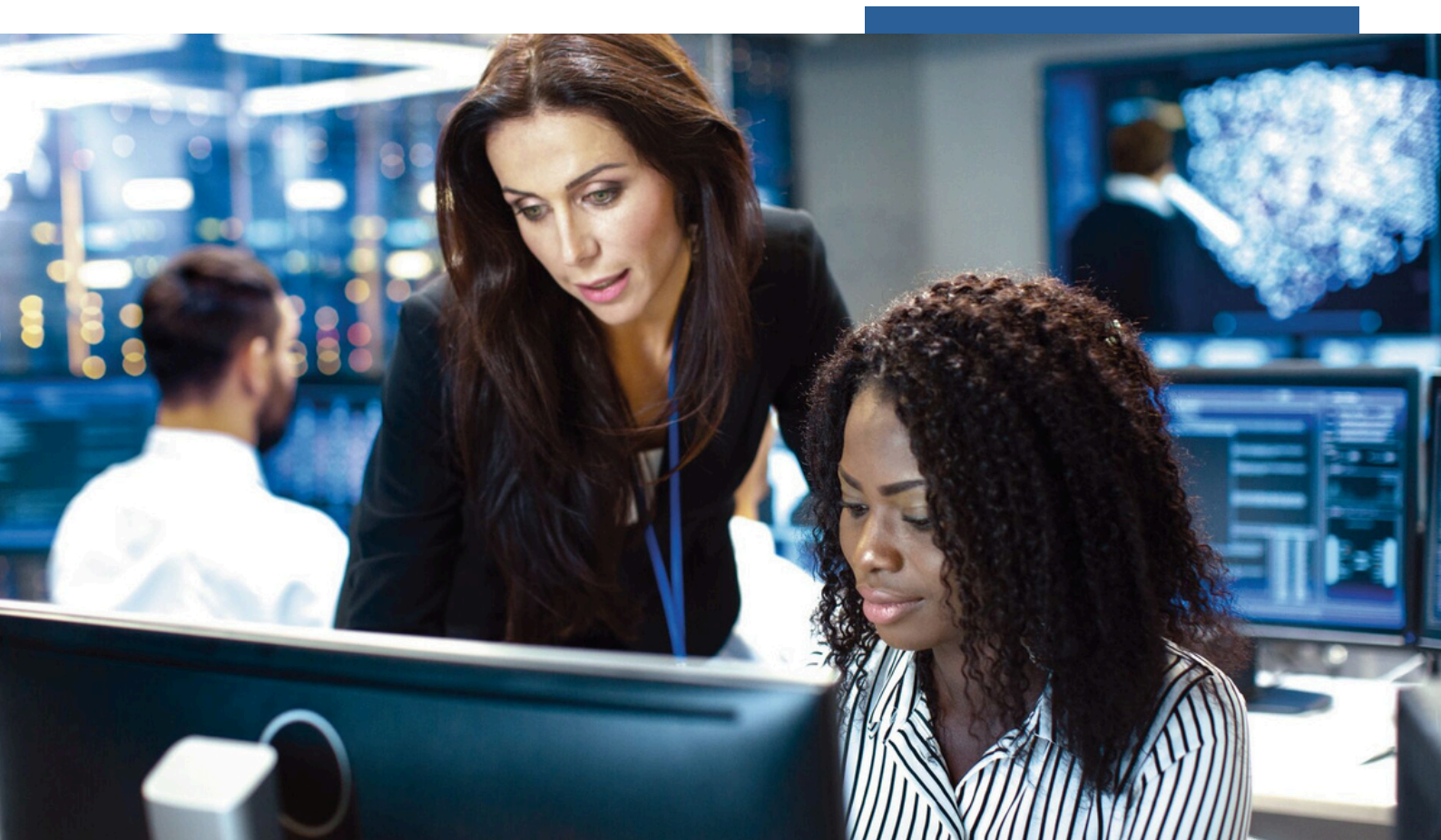



PRACTICES OF SUSTAINABLE CHEMISTRY



→ PROFESSIONAL SCHOOL



LEUPHANA
UNIVERSITY LÜNEBURG



Do you want to get fit for the challenges of today's professional world?

In the part-time, compact certificate programmes, you can expect an **interdisciplinary, cross-disciplinary course of study** that is precisely tailored to your needs and limited time.

DEAR PROSPECTIVE STUDENT,

Thank you very much for your interest in the certificate programme Practices of Sustainable Chemistry. This postgraduate continuing education course provides you with a comprehensive perspective on how chemistry can support sustainability across industries and society.

Across three semesters, you will explore how chemical knowledge and practice relate to sustainable development and are embedded in international frameworks such as the European Green Deal and the UN Sustainable Development Goals. The programme introduces key subject areas including circular resource use, regulatory mechanisms, sustainability assessment strategies, and forward-looking economic models.

The course format combines the flexibility of online learning with an intensive, in-person introductory week at our campus in Lüneburg. This on-site experience fosters interdisciplinary dialogue and helps you build a strong professional network.

We look forward to welcoming you and are happy to support you personally with any questions.



Daniela Nordhoff
Study programme coordinator



To the
programme
website



TABLE OF CONTENTS

CONTENTS AND STRUCTURE



FORMS OF PARTICIPATION



APPLICATION AND ADMISSION



FEES AND FINANCING



BECOME A CHANGE AGENT FOR SUSTAINABILITY IN CHEMISTRY MANAGEMENT

Sustainability is no longer just a theoretical concept – it's a practical necessity across the chemical sector and beyond. This certificate is aimed at professionals who want to integrate sustainable thinking into their daily work and strategy. You will examine how chemistry relates to environmental, economic, and social systems within global policy frameworks.

Topics include resource efficiency and alternative business models. The programme begins with an interdisciplinary introductory week in Lüneburg, followed by flexible online learning. Whether you seek to broaden your impact or move into a sustainability-focused role, this course equips you with practical tools and expertise.

AT A GLANCE

Degree	Certificate of Advanced Studies (CAS) or optionally a certificate of attendance
Credit Points	20
Length of study	3 semesters
Language	English
Start date	March
Application deadline	December 10th
Costs	5,200 Euro total plus the current semester fees of c. 210 Euro per Semester (Semester fees only apply if you decide to acquire ECTS)
Admission requirements	Completed first university degree, advanced knowledge of English
Programme Directors	Prof. Dr. Klaus Kümmerer

FUTURE-ORIENTED QUALIFICATION

In a world increasingly shaped by sustainability goals and regulatory change, professionals with expertise in sustainable chemistry are more in demand than ever. The certificate programme Practices of Sustainable Chemistry equips you with future-relevant qualifications to strengthen your role in science-based decision-making and sustainable transformation.

Through four MBA-level modules, you gain interdisciplinary knowledge in resource efficiency, circular economy, regulatory frameworks, and tools for sustainability assessment. This expertise is key for roles in industry, government, NGOs, or consultancy—especially in product stewardship, chemicals management, sustainability reporting, and innovation.



Whether in the chemical industry, regulatory bodies or sustainability management, this certificate empowers you to support sustainable development and position yourself as a forward-thinking professional.

COURSE OF STUDY

The certificate programme is offered annually and comprises a total workload of 20 ECTS credits, which can be completed in three semesters. A diverse range of e-learning formats combined with personalised support ensures a well-structured digital learning experience tailored to your needs, allowing you to seamlessly integrate your studies into your professional life.



Would you like to view the semester schedule so you can compare it to your personal calendar?

No problem, please contact us and we will send you the current plan.



Pre- and post-processing documents for the synchronous events as well as for your self-study are made available to you via our online learning platform. You can engage with your fellow students and teaching staff around the world in forum discussions, webinars and group work spaces. The platform is also used to submit assessments and for preparing and revising classes.

MODULES AND CONTENTS

F5 SCM CONCEPTS OF SUSTAINABLE CHEMISTRY

- Introduction to the interface between chemistry, society and sustainable development
- Overview of current trends in the field of sustainable chemistry
- Clarification of the terms 'green' vs. 'sustainable'
- Categorisation of the terms in the context of sustainable development

F6 SCM RESOURCES, RECYCLING AND CIRCULAR ECONOMY

- Introduction into the SSbD (Safe and Sustainable by Design) framework
- Approaches for circular water management
- Discussion of challenges related to resource scarcity and climate change
- Strategies for sustainable resource use, including reduction of material flows, recycling practices, and circular value creation

F7 SCM REGULATIONS AND INTERNATIONAL CONVENTIONS

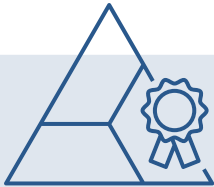
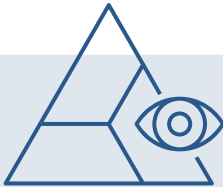
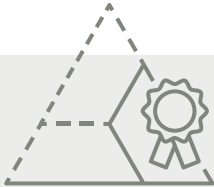
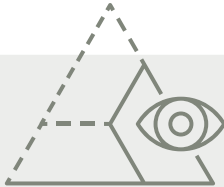
- Introduction to regulations and international conventions in chemicals management and product design
- Focus on their relevance to the practice of chemistry in socio-economic contexts
- Analysis of sector-specific case studies
- Discussion of the potential of regulatory measures as drivers for sustainable development

F8 SCM TOOLS FOR SUSTAINABLE CHEMISTRY

- Overview of assessment methods and tools for sustainability-based decision-making
- Focus on applications in the chemical and related sectors
- Preparation for practical implementation of programme content
- Supports leadership and informed decision-making in sustainability contexts

FORMS OF PARTICIPATION FOR YOUR FURTHER EDUCATION

If you successfully complete all the modules for the certificate with an examination, you will receive your university certificate at the end of the programme: the Certificate of Advanced Studies. This certificate attests to the acquisition of specialist knowledge at university MBA level and is worth a total of 20 credit points. However, you also have the option of waiving the exams without acquiring credit points. At the end of the course, you will then receive a certificate of attendance confirming your participation in the training programme.

	 Certificate studies	 Certificate participation	 Module studies	 Module participation
Immatriculation	✓	✗	✗	✗
Examination	✓	✗	✓	✗
CP acquisition	✓	✗	✓	✗
Degree	University certificate	Certificate of attendance	Confirmation of CP acquisition	Certificate of attendance
Study fees	✓	✓	✓	✓
Semester fees	✓	✗	✗	✗

If you decide to participate in the regular certificate programme, you will enrol as a student and can take advantage of benefits such as student discounts. If you choose the certificate participation option, you will only have to pay the tuition fees and no semester fees.



APPLICATION AND ADMISSION

The certificate programme begins in March each year. You have until 10 December to submit your application digitally using our application tool.

To meet the admission requirements for the certificate programme, you need

- University degree at Bachelor level
- Advanced English language skills



To the
application
website



You must submit the following application documents with your online application by the deadline:

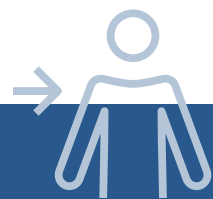
- First University Degree
- Proof of English language skills

After you submit your application, we will review your documents and you will usually receive official notification in January. During the admission process, we will keep you informed of the individual steps and are always available to answer your questions.

It is also possible to take individual modules and to have them credited to the course at a later date, or to opt for the certificate participation. You can register for the modules, subject to availability, up until the start of the module in question.

At the beginning of your studies, you will receive all the information you need about the programme and have the opportunity to meet your fellow students and lecturers.

**Do you have all the documents you need?
We look forward to receiving your application!**



Are you unsure whether you fulfil the admission requirements or whether your documents are sufficient? We will be happy to advise you!

FEES AND FINANCING

The following fees apply for participation in the part-time Certificate Practices of Sustainable Chemistry:

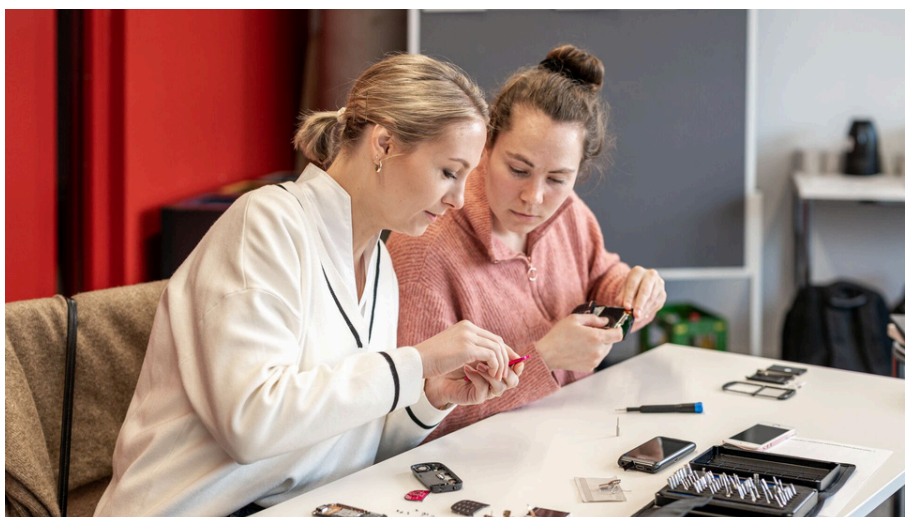
- Tuition fees: €5,200
- Plus semester fee: approx. €210 (per enrolled semester, not for the certificate participation option)

At the beginning of your studies, you determine the payment method in consultation with the coordinator. Instalment and special payments are possible. We will invoice you for the tuition fees based on the information you provide. The semester fee is charged in advance by the university during enrolment.

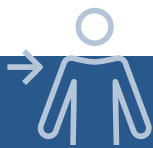
It is also possible to attend individual modules.



Due to the currently applicable legal regulations in Germany, you can claim costs related to your studies against tax. Please feel free to ask your tax advisor!



Studying is not only to your own advantage. Investing in your professional development can also be beneficial for your employer. A discussion with your superiors can provide clarity here. Some students negotiate individual financing models with their employers. These can vary from offers of support for flexible working hours to granting days off for study purposes or full financing of studies. We will be happy to issue the invoices for the tuition fees directly to your employer if they cover (a portion of) the costs.



Arrange a personal consultation appointment by email and get answers to your questions about student financing:
psfinanzierung@leuphana.de



Is it worth the financial investment in a part-time certificate programme? What costs can I expect and how can I best manage them? There are many questions regarding the financing of a part-time course of study.

Before you start your part-time studies at the Professional School, we recommend that you create an individual financing plan. It may also be worth looking at possible scholarships and grants.



Information on
funding and
financing



CONTACT



Programme Coordinator

Daniela Nordhoff

daniela.nordhoff@leuphana.de

[+49.4131.677-2853](tel:+4941316772853)



INDIVIDUAL COUNSELLING

on campus, via email, telephone or virtually through Zoom to evaluate whether the content of the programme meets your expectations. For a counselling interview, please select an appointment in our booking portal.

To the appointment
booking



INFO DAY PART-TIME STUDY

Twice a year, we present the Certificate Practices of Sustainable Chemistry at the [Leuphana Professional School's Info Day](#).

Dates and
registration



DATES AND EVENTS

You can find the latest dates for (online) info events on our [website](#) at any time.

Dates and
registration

