

# COMPLEMENTARY STUDIES AT LEUPHANA COLLEGE SUMMER TERM 2024

---

Information Meeting for Bachelor students  
29 January 2024

→ Team Complementary Studies apl. Prof. Dr. Maik Adomßent



# COMPLEMENTARY STUDIES AT LEUPHANA COLLEGE

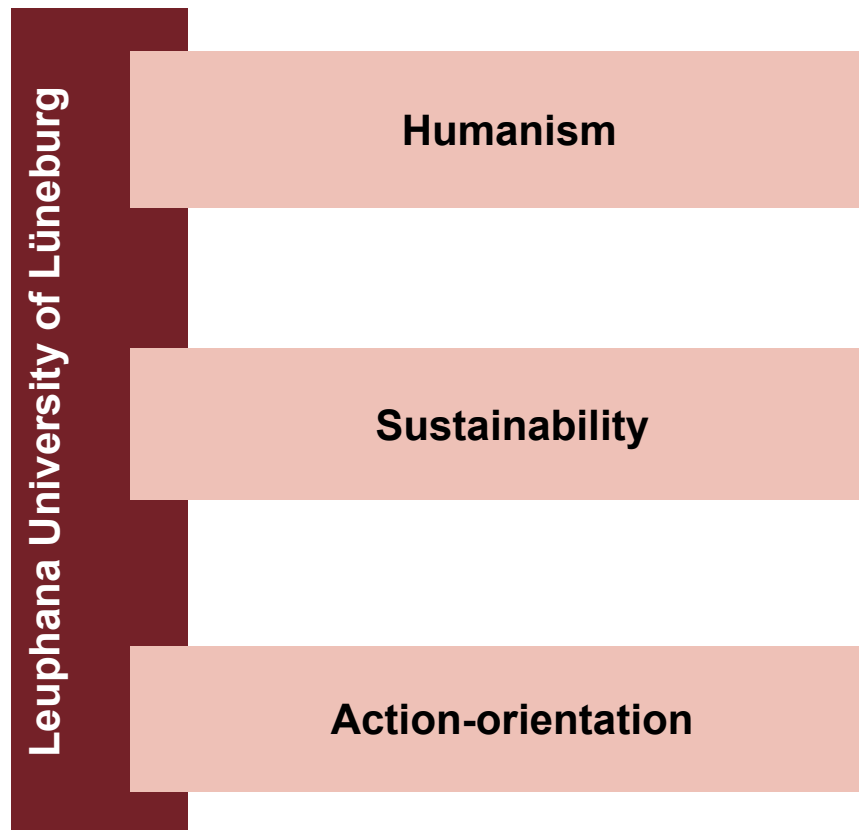
- 1) The idea behind the Complementary Studies
- 2) The structure of the Complementary Studies
- 3) Selection of courses and rules for enrolment
- 4) Enrolment procedure





## **1. THE IDEA BEHIND THE COMPLEMENTARY STUDIES**

# 1. THE IDEA BEHIND THE COMPLEMENTARY STUDIES



# 1. THE IDEA BEHIND THE COMPLEMENTARY STUDIES

- Complementary Studies translate the idea of **Liberal Education** into a **daily practice**
- They ***complement*** the Major / Minor by ...
  - **adding other prospects** to one's own disciplinary perspective
  - engaging in scientific **topics outside one's own subject area** and related thinking cultures
  - inviting to communicate **across disciplinary boundaries** and to engage in new entry points and approaches



# 1. THE IDEA BEHIND THE COMPLEMENTARY STUDIES

- Complementary Studies invite you to a change of perspective! **But ... what for?**

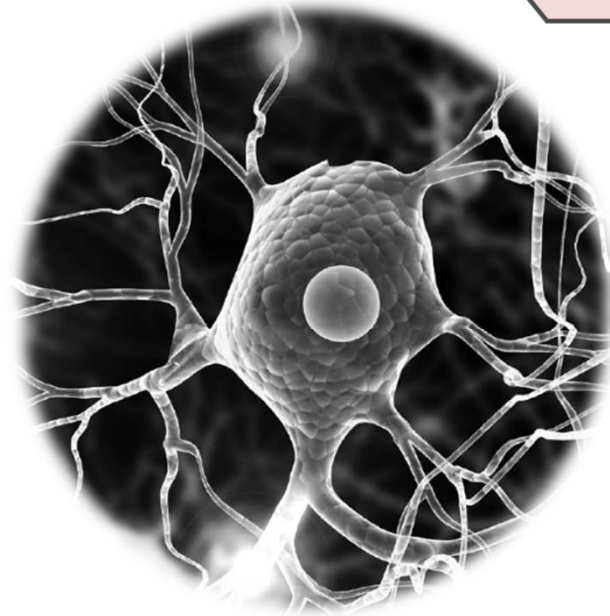


- to work on interdisciplinary tasks
- to get to know different scientific approaches, methods and ways of thinking
- to extend your perspective on disciplinary boundaries
- to reflect your position in the scientific community
- to reflect your personality and biography



# 1. THE IDEA BEHIND THE COMPLEMENTARY STUDIES

*Requirements which  
the Complementary Studies  
can be supportive to prepare*



Unknown problems and challenges

Complexity and velocity

Frequent occupational changes

Working in international contexts

Communication across disciplinary boundaries

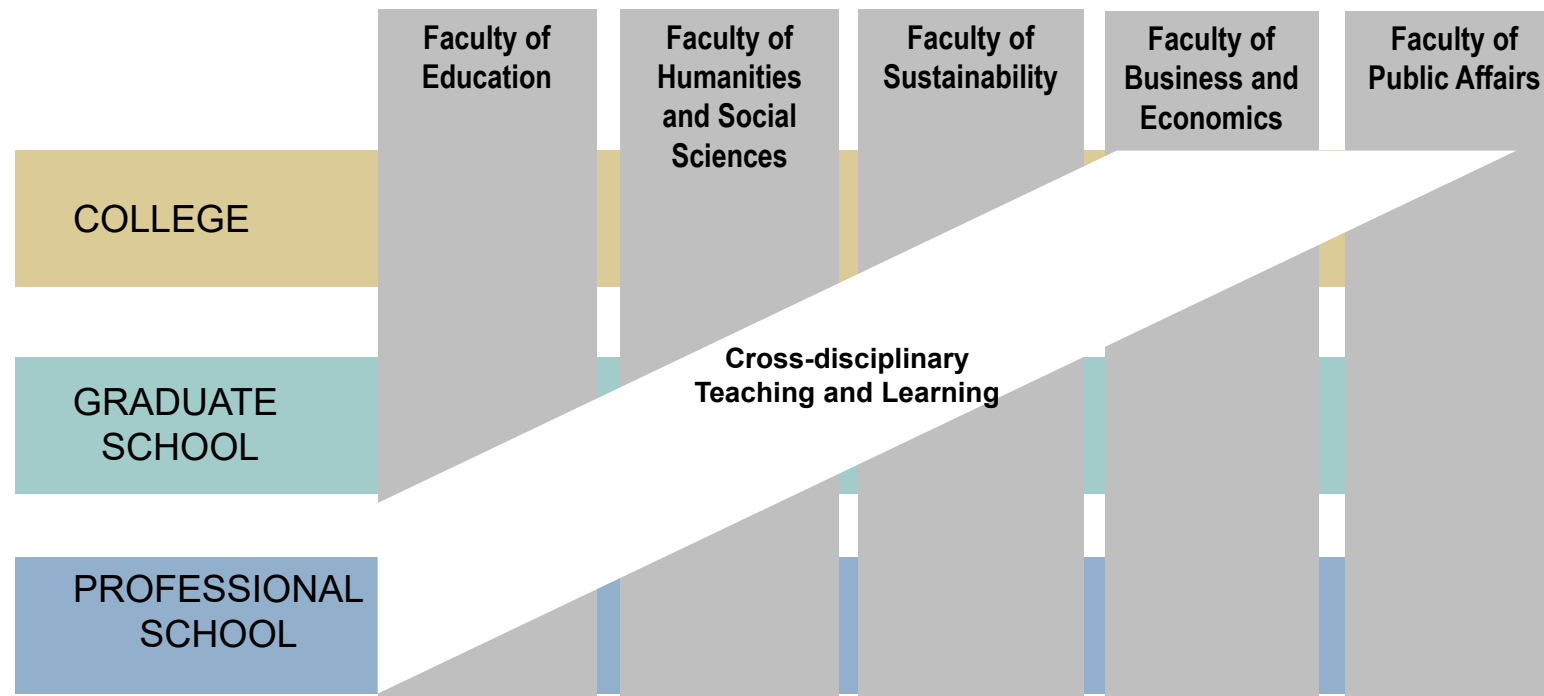




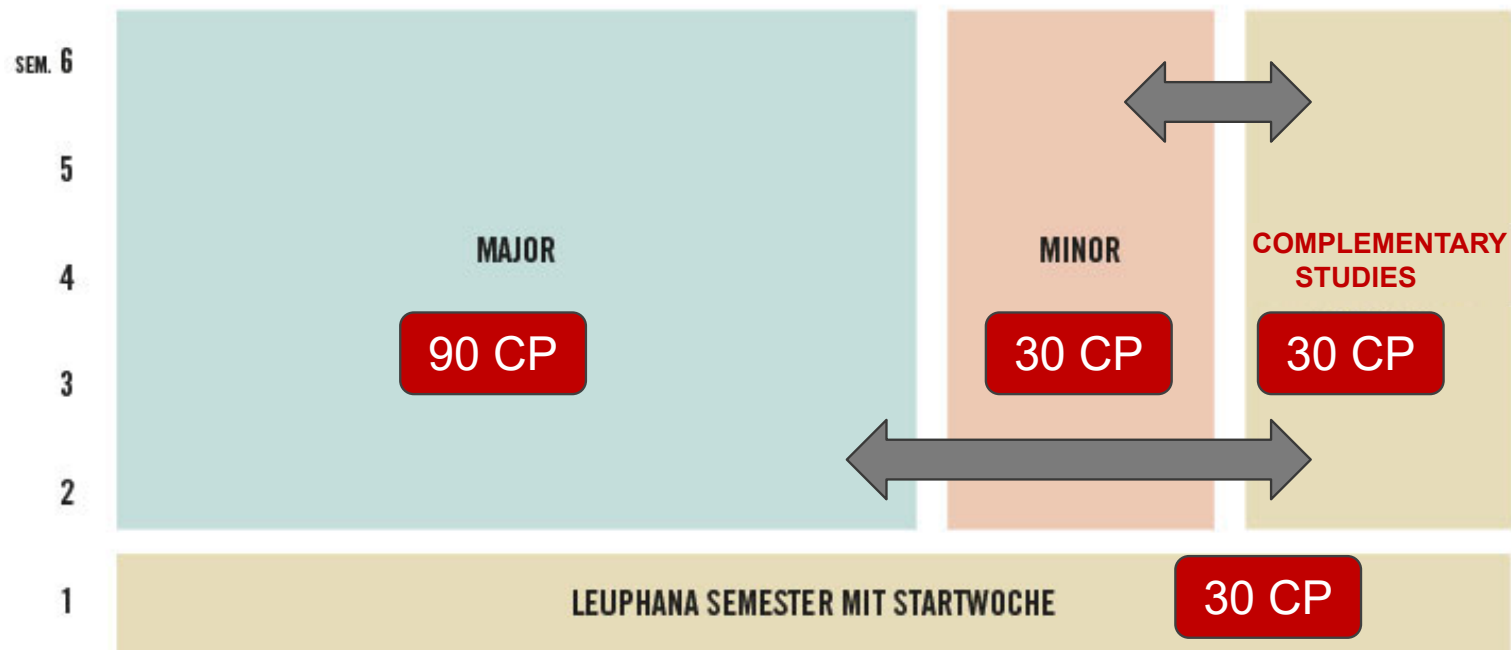
## **2. THE STRUCTURE OF THE COMPLEMENTARY STUDIES**



## 2. THE STRUCTURE OF THE COMPLEMENTARY STUDIES



## 2. THE STRUCTURE OF THE COMPLEMENTARY STUDIES



<https://www.leuphana.de/en/college/study-program/complementary-studies-programme.html>



## 2. THE STRUCTURE OF THE COMPLEMENTARY STUDIES

### Four perspectives (= scientific areas)

- *social sciences* perspective
- *humanities* perspective
- *sciences* perspective
- *interdisciplinary and transdisciplinary* perspective

### Three approaches

- *methods-oriented*: to learn or specialise in subject-specific research tools
- *practice-oriented*: for practical reference and a extension in perspective
- *mediality-oriented*: to discuss current texts, theories and controversies

**12 different modules combining perspectives & approaches**



## A VAST VARIETY OF AT LEAST 100 COURSES IS OFFERED EACH SEMESTER

		perspectives			
		Social sciences	Humanities	Natural sciences	Inter- and trans-disciplinary perspective
approaches	mediality-oriented				
	method-oriented				
	practice-oriented				





### **3. SELECTION OF COURSES AND RULES FOR ENROLMENT**

### 3. SELECTION OF COURSES AND RULES FOR ENROLMENT



- free to design individually based on personal interests
- What serves your ...
  - ... further study?
  - ... professional career?
  - ... thirst for knowledge?
- Diverse possibilities of profile building
  - tools for knowledge creation
  - foreign languages
  - major affinity
  - “butterfly” (flying from flower to flower)

➤ **ATTENTION: each module can only be chosen once!**



# 3. SELECTION OF COURSES AND RULES FOR ENROLMENT

myStudy

Search for courses

seminars in non-German language  
earmarked with "FSL"

Dashboard

Dean of Studies >

Course schedules

Course Catalogue v

Course Catalogue

Search for courses

Module Search

Create PDF

Module handbook

Program of study Leuphana Bachelor (B.A./B.Eng./B.Sc./LL.B.)

Field Komplementärstudium

Module select/choose

Semester of enrollment in program of study Semester of enrollment in program of study

Title FSL

Lecturer

Extended search options

summer term 2024:  
➤ 45 FSL seminars  
➤ 42 in English



### 3. Selection of courses and rules for enrolment

#### Special Formats

##### Basic Programme Practical Phase (in German only)

- opportunity for recognition of internships in the Complementary Studies

Contact: apl. Prof. Dr. Maik Adomßent / [basispro@leuphana.de](mailto:basispro@leuphana.de)

- myStudy: course description (each semester)

##### Gender Diversity Certificate (GDC)

- a voluntary, study-integrated offer that indicates the acquisition of gender diversity competencies

- two basic & two advanced courses, total of 20 CP

- <https://www.leuphana.de/en/institutions/office-for-equal-opportunities/offers-and-information/gender-diversity-certificate-gdz/gdz-bachelor.html>





**LEUPHANA**  
UNIVERSITÄT LÜNEBURG

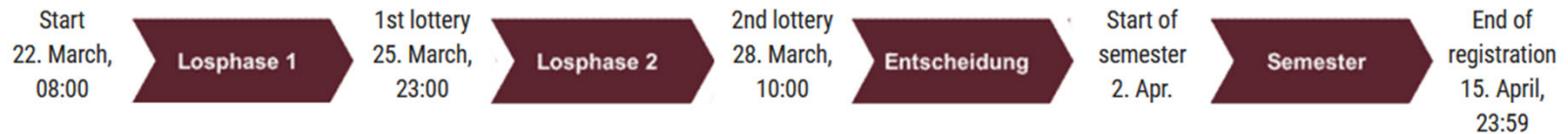
## 4. ENROLMENT

# 4. ENROLMENT



Complementary Studies allow you to attend more than one seminar per semester!

## Information on the central registration procedure



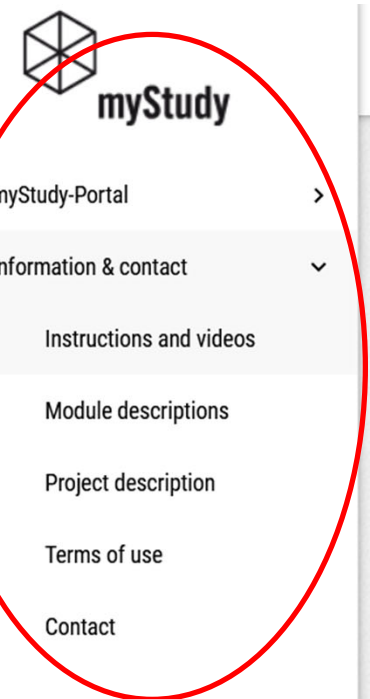
### ► Detailed information on registration

## Central assessment dates and periods

<b>Registration for assessments</b>	2. April 2024 bis 15. May 2024
<b>Assessment time</b>	22. May 2024 bis 15. September 2024
<b>First assessment period</b>	15. July 2024 bis 31. July 2024
<b>Second assessment period</b>	16. September 2024 bis 28. September 2024

**1<sup>st</sup> seminar**  
as per **lottery procedure**  
**Further seminars**  
as per **direct enrolment procedure** in seminars with free places!



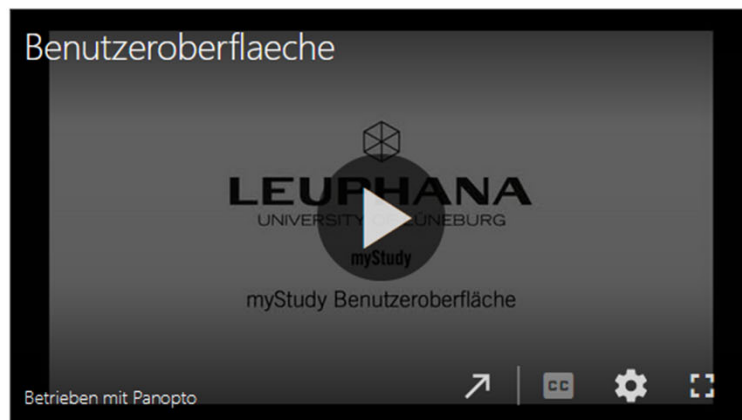


# Detailed information on lottery procedure and remaining place allocation in the „Cluster“ Complementary Studies

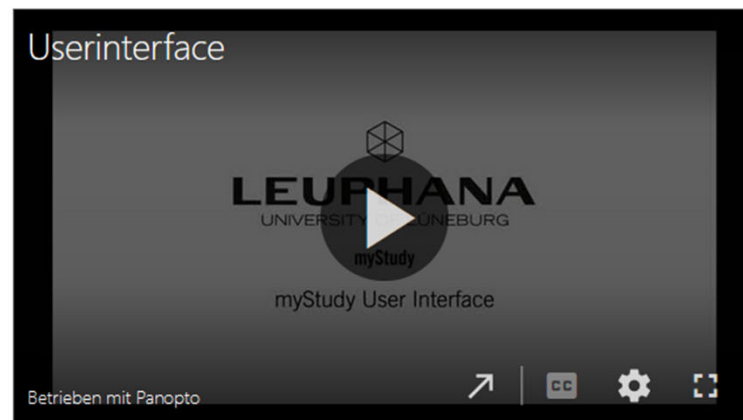
[myStudy information for lecturers \(German\)](#)

## myStudy video tutorials on starting your studies (DE & EN)

**German**  
myStudy user interface



**English**  
myStudy user interface



myStudy registration procedure



myStudy course registration



# COMPLEMENTARY STUDIES IN A NUTSHELL

- invitation to a possible focus across several perspectives
- clear basic structure of **12 modules**:
  - Four perspectives** (scientific fields) are each concretised by **three approaches** (method-oriented, practice-oriented, mediality-oriented)
- clear allocation rules: all modules can be **freely chosen** by students; however, **each module can only be taken once** (even for additional CPs!)



# FURTHER INFORMATION ONLINE

## General information:

<https://www.leuphana.de/en/college/study-program/complementary-studies-programme.html>

## Assignment regulations, further information regarding GDZ etc. (only in German):

<https://www.leuphana.de/college/studium/ks.html>



# KONTAKT



Lukas Wiggering, M.A.



Astrid Becker, M.A.  
(in Elternzeit)



Dr. Felix Lösing



apl. Prof. Dr. Maik Adomßent

TEAM Complementary Studies | College |  
Universitätsallee 1 | 21335 Lüneburg  
Building 8, Office 121 (1st floor)  
phone 04131.677-237 | [komplementaerstudium@leuphana.de](mailto:komplementaerstudium@leuphana.de)

Consultation hour  
Wednesday 14-15 pm (during lecture period)  
and upon individual agreement

